

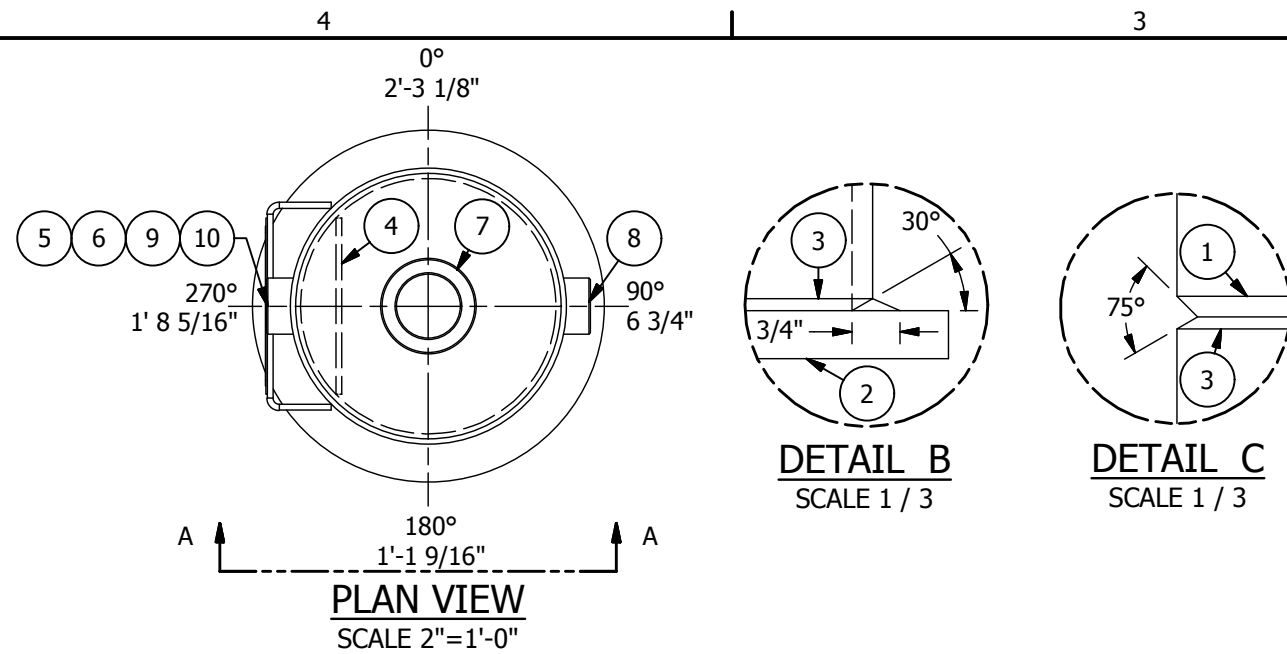


ASME Steel Drip Pod

Storage Capacity 7 Gallons

Tank Size 8" Diameter x 2'-6" Straight Shell

Contact our Sales Department for Pricing



DETAIL B
SCALE 1 / 3

DETAIL C
SCALE 1 / 3

PLAN VIEW
SCALE 2"=1'-0"

PARTS LIST									
SYM	ITEM	QTY	SHT	PART NUMBER	DESCRIPTION	SERVICE	PROJECTION	MATERIAL	
	1	1		339780	TOP HEAD, CAP, 4" SCH 40/STD (BUTT-WELD)			SA-234 GR WPB	
	2	1		338069	BOTTOM HEAD, 11" D x 3/4" THK PLATE			SA-36	
	3	30.000 in		338197	SHELL, PIPE, 8" SCH 40 SMLS x 2'-6" LONG			SA-106 GR B	
BF	4	1		CNC	BAFFLE, 3/16" THK x 5 1/2" x 7" LONG FLAT			SA-36	
NP	5	1	3	CNC	BRACKET, NAME PLATE			SA-36	
NP	6	1		339582	NAME PLATE			ALUMINUM	

SCHEDULE OF FITTINGS									
SYM	ITEM	QTY	SHT	PART NUMBER	DESCRIPTION	SERVICE	PROJECTION	MATERIAL	
N1	7	1		338412	COUPLING, 2" 3000# HALF	OUTLET	1"	SA-105	
N2	8	1		338362	COUPLING, 1" 3000# HALF	DISCHARGE OUTLET	3/4"	SA-105	
N3	9	1		338284	COUPLING, 1/2" 3000# HALF	CONDENSATION OUTLET	3/4"	SA-105	
N4	10	1		338362	COUPLING, 1" 3000# HALF	INLET	3/4"	SA-105	

CONSTRUCTION NOTES:

- BUILD IN STRICT ACCORDANCE WITH THE 2013 MANDATORY SECTION OF THE ASME BOILER & PRESSURE VESSEL CODE: SECTION VII, DIV. 1. VESSEL TO BE MARKED WITH ASME "ASME" STAMP.
- INSPECTION BY "ONECIS INSURANCE COMPANY".
- ALL WELDS TO BE MARKED WITH WELDER I.D.

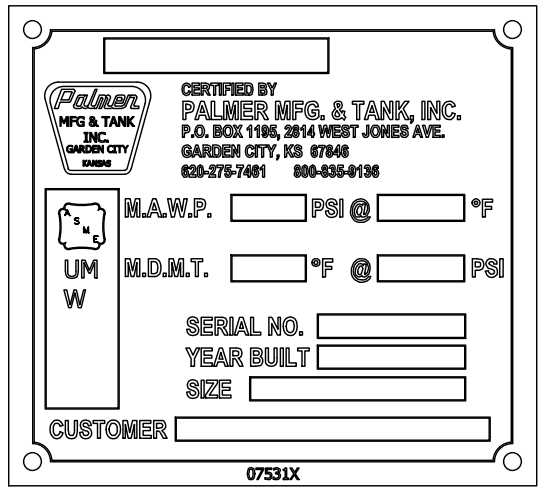
NOTES:

- ALL DIMENSIONS SHOWN AS NOMINAL (NOM) ARE ± 1 1/2%.
- HYDROTEST TANK TO 195 PSI. (1.3 x DESIGN PRESSURE).
- BEFORE WELDING THE BOTTOM PLATE TO THE SHELL, EXAMINE THE PERIPHERAL EDGE FOR DELAMINATION WITH LIQUID PENETRANT. AFTER WELDING, BOTH THE PERIPHERAL EDGE OF THE BOTTOM PLATE AND ANY REMAINING EXPOSED SURFACE OF THE WELD JOINT PREPARATION SHALL BE REEXAMINED WITH LIQUID PENETRANT. UG-93(d)(3).

COATINGS:

EXTERIOR:
 CLEAN SURFACE FREE OF RUST, SLAG, & ALL FOREIGN MATTER.
 1 ct. SHERWIN WILLIAMS HE ALKYD.
 2.0-2.5 MILS DRY FILM THICKNESS.
 2.0-2.5 TOTAL MILS DFT
 COLOR: CARLSBAD TAN

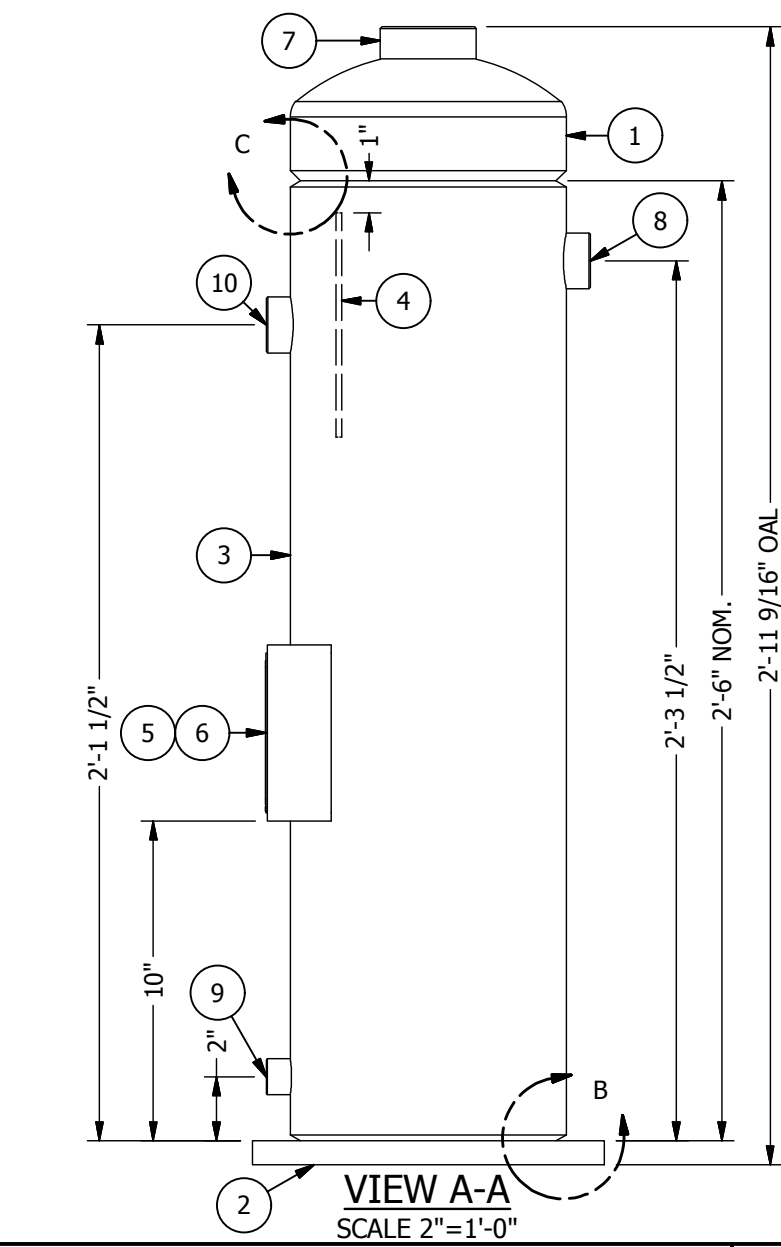
SURFACE AREA = 10 FT. SQ.



DESIGN CONDITIONS			
DESIGN PRESSURE: 150 PSI	EMPTY WEIGHT: 90 LBS.		
DESIGN TEMP: -20° F. TO 400° F.	CAPACITY: 7 GAL.		
OPERATING PRESSURE: 45 PSI	RADIOGRAPHIC TEST: -		
OPERATING TEMP: 400 PSI	CORROSION ALLOWANCE: -		
EXTERNAL PRES: -	HEAT TREATMENT: -		
M.D.M.T.: -20° F.	SEISMIC: -		
CONTENTS: CONDENSATE	WIND: -		
SPECIFIC GRAVITY: 1.0	MFG SPEC: ASME SECTION VIII		

REV	DESCRIPTION	CHK BY	DATE	DWG
E	CONVERT TO 3D MODEL.	J.K.	7/10/205	C.C.
D	CHANGED 8" WELD CAP TO GRADE WPB. UPDATED TO 2013 CODE. UPDATED PART #'S TO JDE. ADDED NOTE 3 TO SOECIFY PT ON BOTTOM PLATE.	D.C.	10/6/2014	J.K.
C	CHANGED M.A.E.W.P. FROM 0 TO "-." TO AVOID CONFUSION. UPDATED INSPECTION COMPANY.	C.T.	10/2/2013	J.K.

DATE: 2/14/2013	DRAWN BY: C.C.
CHECKED BY: J.K.	SERIAL NUMBER:
TANK NAME: DRIP POT	
S.O. NUMBER:	
PART NUMBER: 339548	
DRAWING NUMBER: 10068A-1	
REV. E	
8" x 2'-6" STORAGE TANK	
SHEET: 1 OF 3	



VIEW A-A
SCALE 2"=1'-0"

REVISION HISTORY