

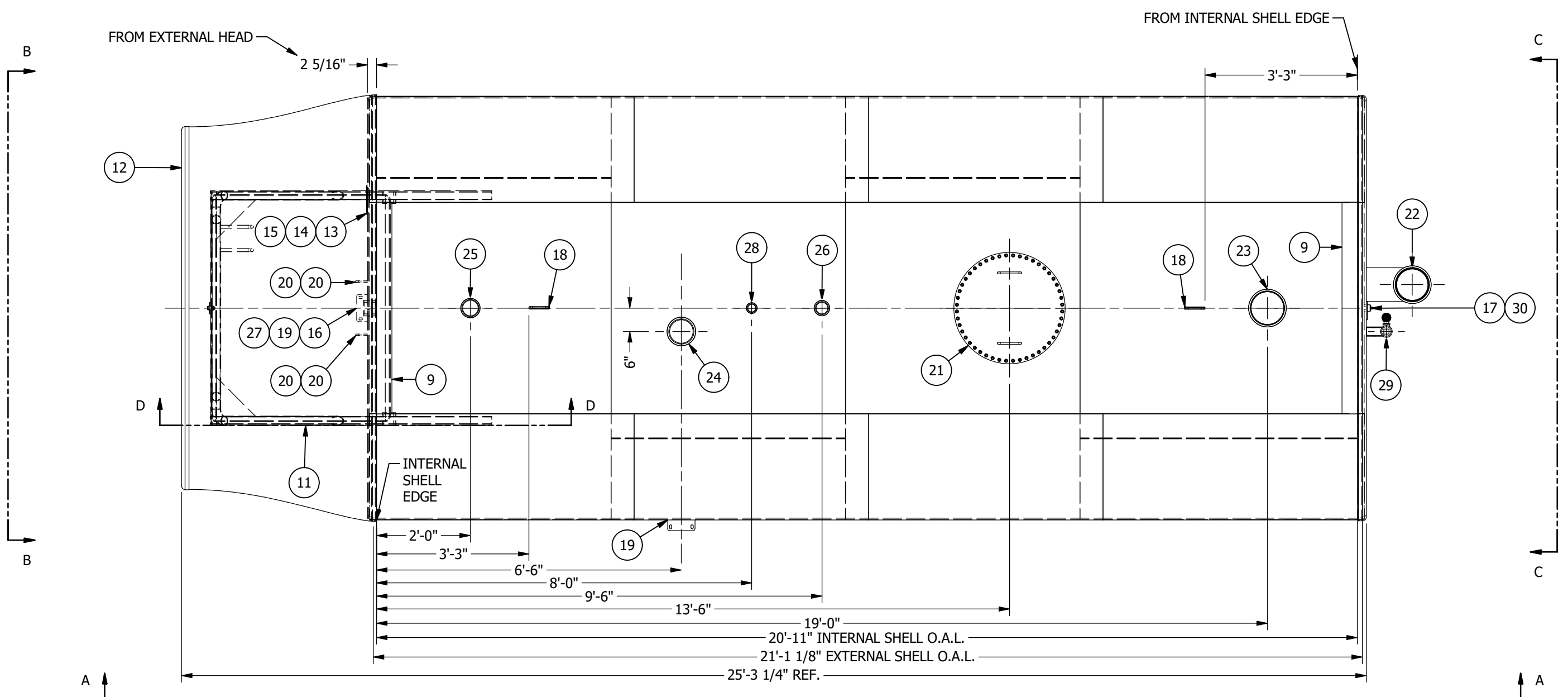


Certified UL-142 Double Wall Horizontal Tank for Fuel Storage

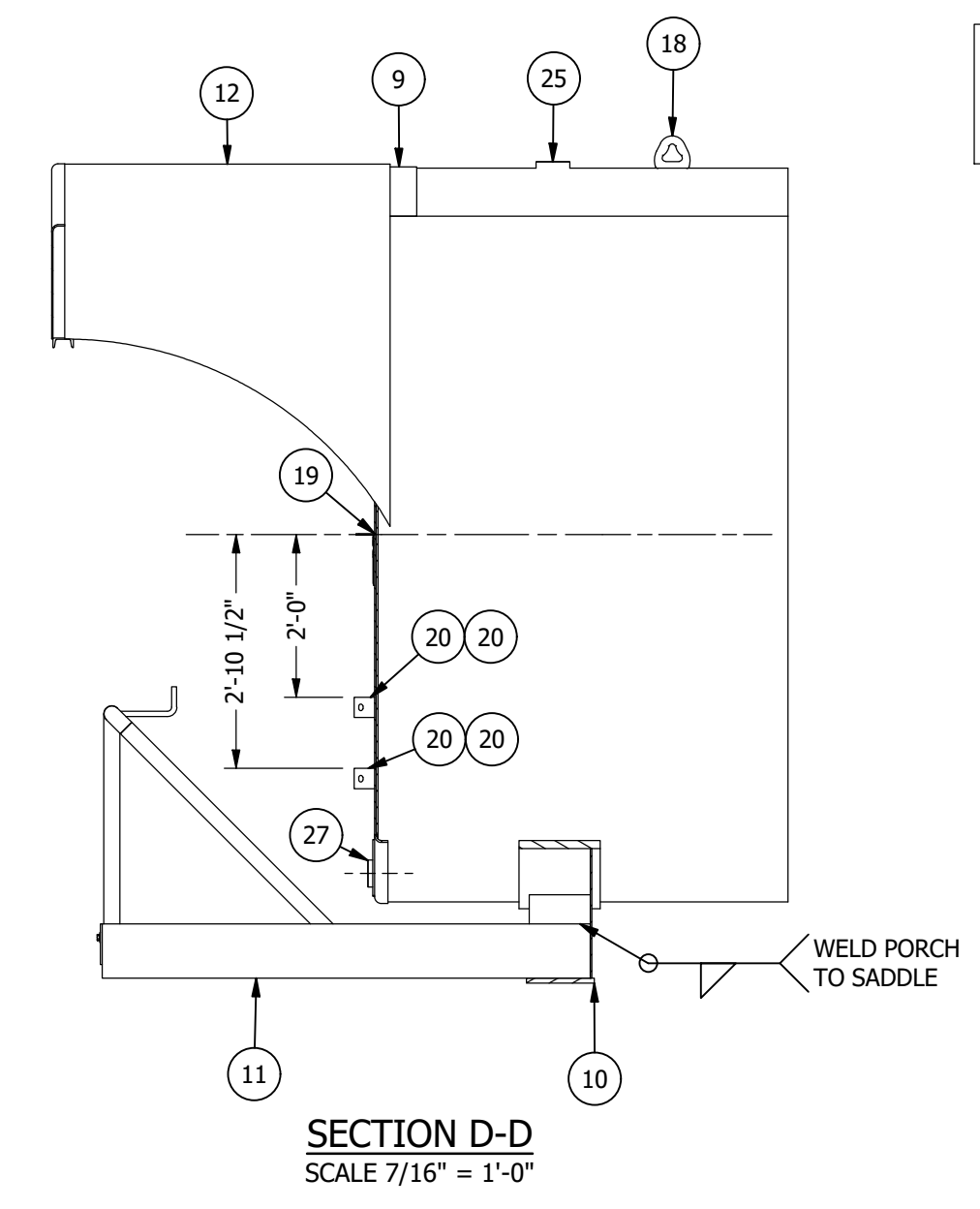
Storage Capacity 10,000 Gallons

Tank Size 9' Diameter x 21' Straight Shell on Cradles with Skid & Weatherhood

Contact our Sales Department for Pricing



PLAN VIEW
SCALE 7/16" = 1'-0"



SECTION D-D
SCALE 7/16" = 1'-0"

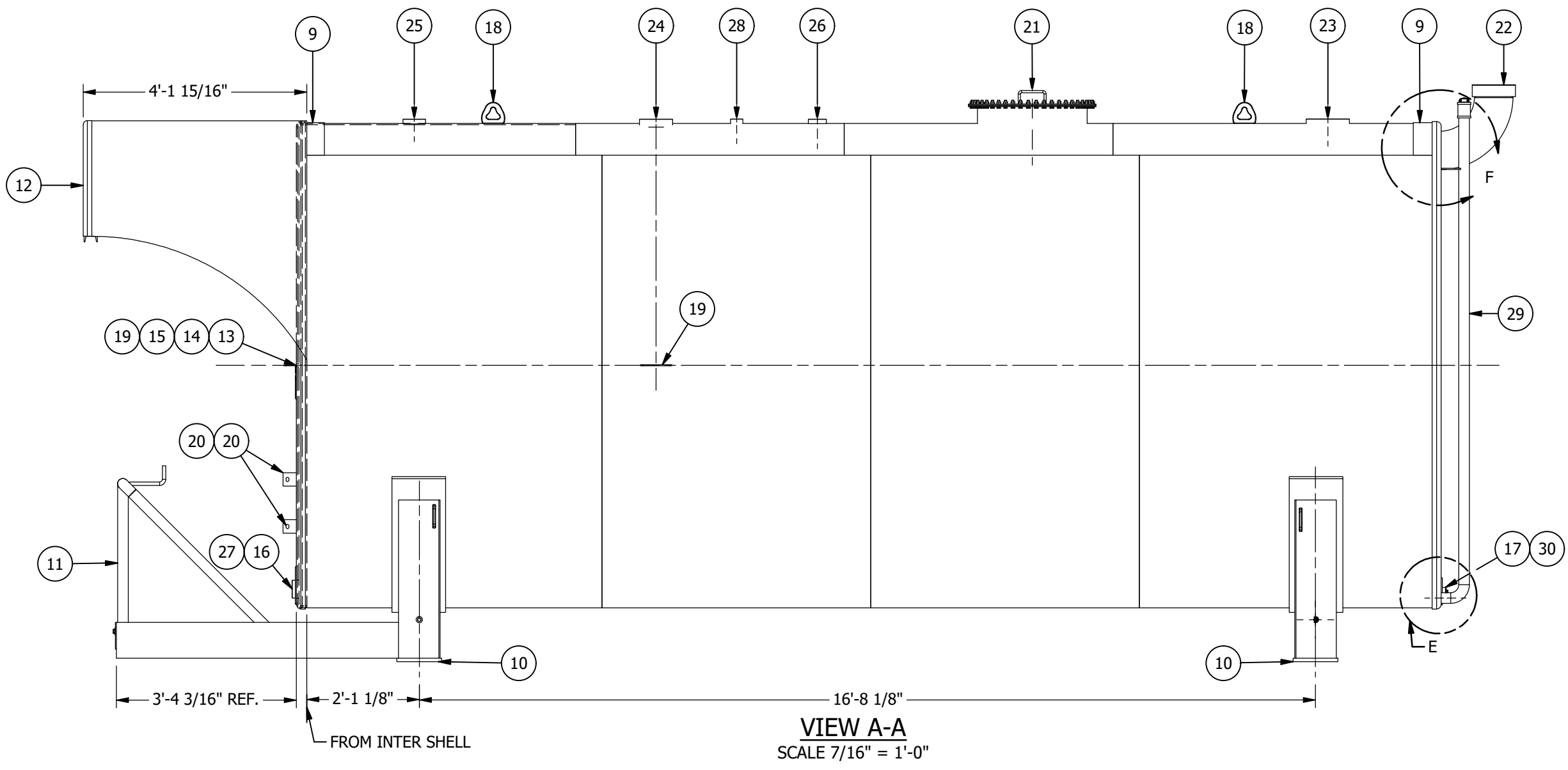
0088-23-01-0003.E
SECONDARY CONTAINMENT
ABOVEGROUND TANK FOR FLAMMABLE LIQUIDS
REG.

Palmer
PIPE & TANK TEMPLS
GARDEN CITY, KS 66503-9136

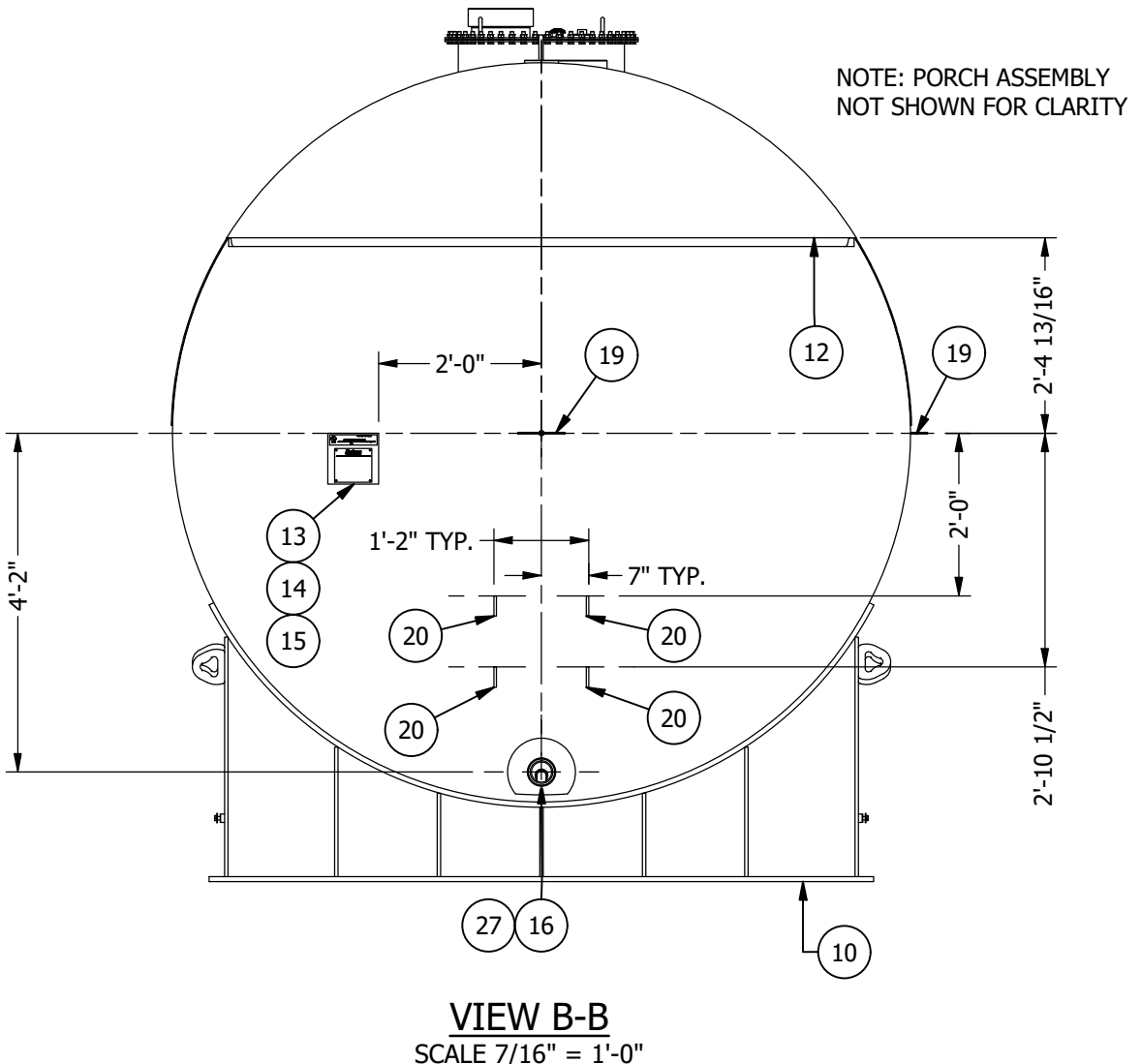
TAG NO. 17A-4204
SERIAL NUMBER _____ DATE BUILT XX/20XX
DIAMETER 9'-0" HEIGHT 21'-0"
CONTENTS REFINED FUEL
CAPACITY 10,000 GAL. TEMP. AMBIENT S.G. 1.0
PRESSURE DESIGN ATMOS. WORKING ATMOS.
MATERIAL SA-36
HEAD THK. 5/16" / 1/4" SHELL THK. 1/4" / 3/16"
CUSTOMER _____
CUSTOMER P.O. _____
THIS TANK REQUIRES EMERGENCY RELIEF VENTING. CAPACITY NOT LESS THAN 359.819 CUBIC FEET PER HOUR FOR INNER TANK, AND 359.819 CUBIC FEET PER HOUR FOR ANNUAL SPACE.

PARTS LIST									
ITEM	QTY	SYM	PART#	SHT#	DESCRIPTION	SERVICE	PROJ.	MATERIAL	
1	1		340393	3	FLANGED HEAD, 9'-0" O.D. x 5/16" THK (9'-2 7/8" FLO)	INNER		SA-36	
2	1		340393	4	FLANGED HEAD, 9'-0" O.D. x 5/16" THK (9'-2 7/8" FLO)	INNER		SA-36	
3	1		340110	5	FLANGED HEAD, 9'- 7/8" O.D. x 1/4" THK	OUTER		SA-36	
4	1		340110	6	FLANGED HEAD, 9'- 7/8" O.D. x 1/4" THK	OUTER		SA-36	
5	3		340384		BAND, 9'-0" O.D. X 5'-0" H. X 1/4" THK.	INNER		SA-36	
6	1		340388		BAND, 9'-0" O.D. X 6'-0" H. X 1/4" THK.	INNER		SA-36	
7	2		410387		BAND, 9'- 3/8" O.D. X 5'-0" H. X 3/16" THK.	OUTER		SA-36	
8	2		410388		BAND, 9'- 3/8" O.D. X 5'-0" H. X 3/16" THK.	OUTER		SA-36	
9	2		342114		SPACER, 9'- 3/8" O.D. x 6" H x 3/16" THK (4'-8 5/8" SCL)	SPACER		SA-36	
10	2			7	SADDLE			CARBON STEEL	
11	1			8	PORCH ASSEMBLY			CARBON STEEL	
12	1			9	RAIN SHIELD ASSEMBLY			CARBON STEEL	
13	1		338337		BRACKET, UL NAMEPLATE			SA-36	
14	1		338215	11	NAMEPLATE, HORIZONTAL DOUBLEWALL TANK			ALUMINUM	
15	1		346042	11	UL LABEL, ABOVEGROUND DOUBLEWALL			BRASS	
16	1		CNC	12	REPAD, 3" COUPLING 3M			SA-36	
17	1		341090		REPAD, 1" COUPLING 3M			SA-36	
18	2	LE	338382		LIFTEYE, PHOENIX FORGE MEDIUM			SA-105	
19	2			13	MOUNTING PLATE			SA-36	
20	4		338514		BRACKET, LADDER			SA-36	

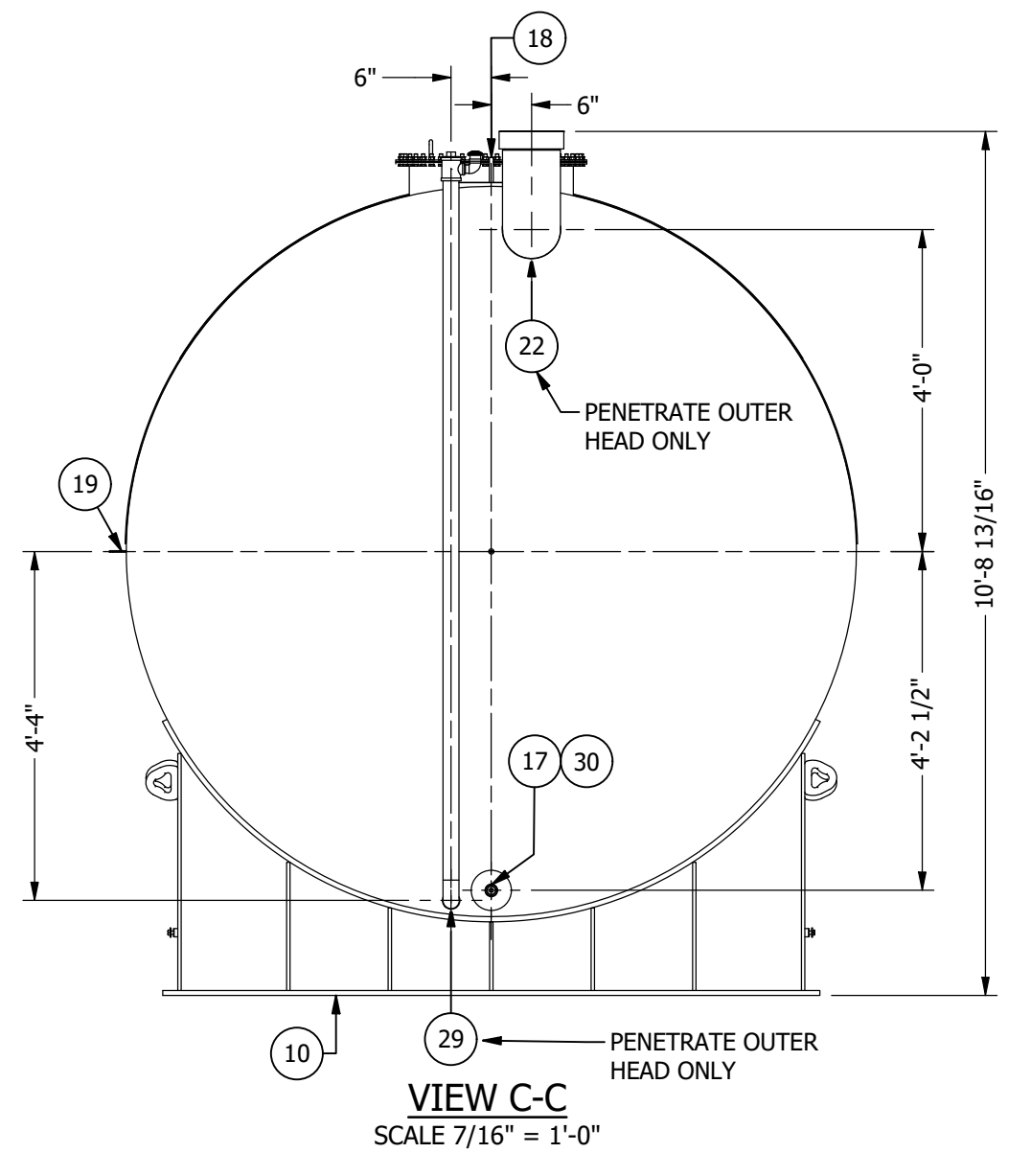
SCHEDULE OF FITTINGS									
ITEM	QTY	SYM	PART#	SHT#	DESCRIPTION	SERVICE	PROJ.	MATERIAL	
21	1	M1		14	MANWAY, 24" STANDARD	ACCESS	4"	VARIOUS	
22	1	N1		15	E-VENT ELBOW ASSEMBLY, 8"	SECONDARY E-VENT		CARBON STEEL	
23	1	N2	342025		COUPLING, 8" FNPT HALF	E-VENT	1"	API-5L GR B	
24	1	N9	339428		COUPLING, 6" FNPT HALF MERCHANT	SPARE FILL	1"	SA-105	
25	1	N3	339264		COUPLING, 4" MERCHANT HALF	SPARE OUTLET	1"	SA-105	
26	1	N5	338604		COUPLING, 3" MERCHANT	WORKING VENT	1"	SA-105	
27	1	N6	338604		COUPLING, 3" MERCHANT	INLET/OUTLET	1"	SA-105	
28	1	N9	339484		COUPLING, 2" MERCHANT	GAUGE	1"	SA-105	
29	1	N8		16	MONITOR TUBE, 2"	MONITOR		CARBON STEEL	
30	1	N7		17	DRAIN - SIPHON, 1"	DRAIN	1"	CARBON STEEL	



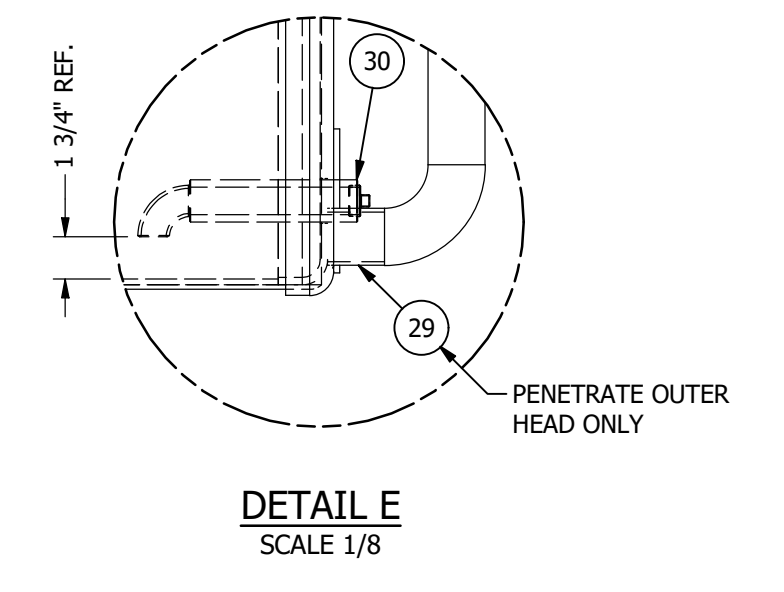
VIEW A-A
SCALE 7/16" = 1'-0"



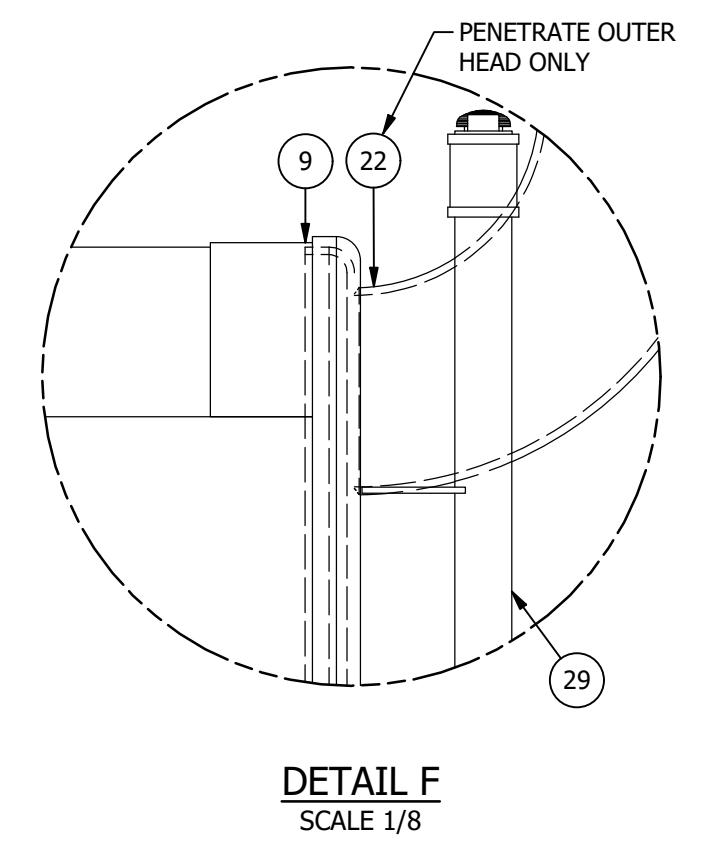
VIEW B-B
SCALE 7/16" = 1'-0"



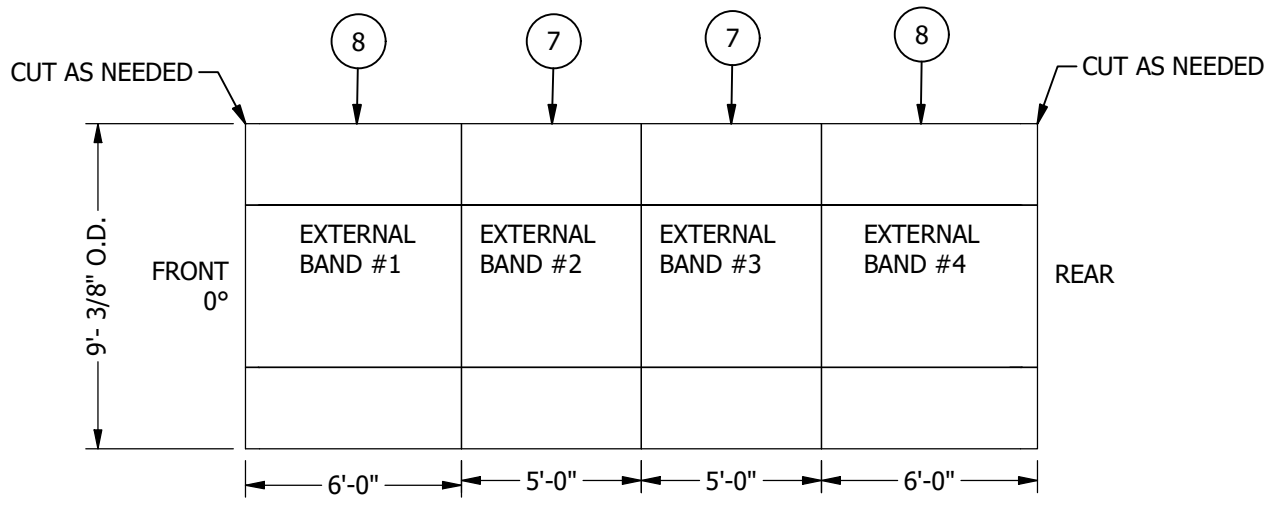
VIEW C-C
SCALE 7/16" = 1'-0"



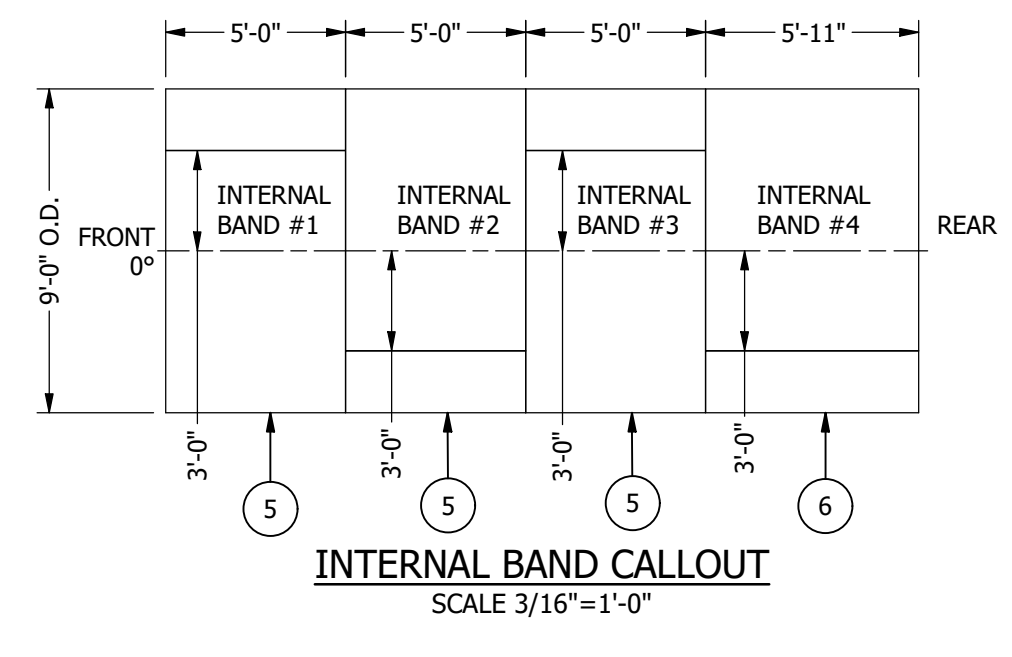
DETAIL E
SCALE 1/8"



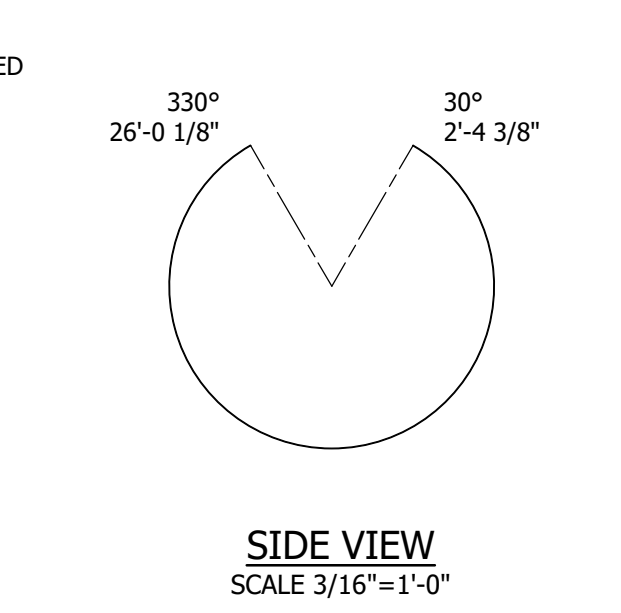
DETAIL F
SCALE 1/8"



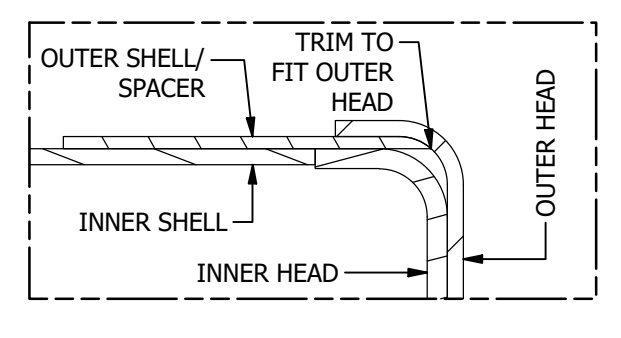
EXTERNAL BAND CALLOUT
SCALE 3/16"=1'-0"



INTERNAL BAND CALLOUT
SCALE 3/16"=1'-0"



SIDE VIEW
SCALE 3/16"=1'-0"



TANK DETAIL
SCALE 1 / 3

NOTES:

1. THE TANK IS TO BE POSITIVELY VENTED TO THE ATMOSPHERE AT ALL TIMES. IT IS THE RESPONSIBILITY OF THE CUSTOMER TO DETERMINE THE PROPER SIZE OF VENT TO PREVENT THE TANK FROM BEING OVER PRESSURIZED DURING FILLING AND TO PREVENT THE TANK FROM COLLAPSING DURING REMOVAL OF THE PRODUCT.
 2. ALL OPENINGS, INCLUDING FACE OF FLANGES, CONDUIT ENTRANCES, THREADED OPENINGS, & MECHANICAL SURFACES SHALL BE PLUGGED OR COVERED TO PROPERLY PROTECT FROM DAMAGE AND TO KEEP CONNECTIONS & INTERNALS CLEAN & DRY DURING STORAGE & SHIPPING.
 3. REFER TO THE TANK DRAWING AND SADDLE DETAIL PAGE FOR THE LOCATION OF THE ANCHOR HOLES. THIS DIMENSION IS ± 1% DUE TO MANUFACTURING VARIABLES. WE RECOMMEND THAT THE ANCHOR BOLTS NOT BE SET UNTIL AFTER TANK DELIVERY. ANCHOR BOLTS ARE TO BE PROVIDED BY CUSTOMER OR BY THE CONTRACTING ENTITY.
 4. FLANGES INSTALLED IN THE SHELL WILL BE INSTALLED W/BOLT HOLES STRADDLING THE TANKS VERTICAL OR HORIZONTAL CENTER LINE. FLANGES INSTALLED IN THE HEADS WILL BE INSTALLED W/BOLT HOLES STRADDLING THE 0°-180° & 90°-270° CENTER LINES.
 5. LEAK TEST TANK BY AIR PRESSURE. APPLY AIR PRESSURE IN PRIMARY TANK TO 3-5 PSI PRIOR TO INSTALLING SECONDARY CONTAINMENT. HOLD PRESSURE AND APPLY SEAM TEST SOLUTION TO EACH WELD TO ASSURE NO LEAKS ARE PRESENT. RELIEVE PRESSURE AND INSTALL SECONDARY CONTAINMENT. PRESSURIZE PRIMARY TANK TO 3-5 PSI. HOLD PRESSURE AND APPLY SEAM TEST SOLUTION TO EACH WELD TO ASSURE NO LEAKS ARE PRESENT. BLEED PRESSURE FROM PRIMARY TANK INTO ANNUAL SPACE. INCREASE PRESSURE IN INNER TANK TO 3-5 PSI. APPLY SEAM TEST SOLUTION TO EACH WELD TO ASSURE NO LEAKS ARE PRESENT.
 6. TEST ANNULAR SPACE BY APPLYING A VACUUM EQUIVALENT TO 18-20 INCHES Hg. HOLD FOR A MINIMUM OF 12 HOURS. VACUUM SHOULD MAINTAIN 18-20 Hg ± 2" Hg.
 7. ALL DIMENSIONS SHOWN AS NOMINAL (NOM) ARE ± 1-1/2%. ALL OTHER DIMENSIONS ARE ± 1/8" UNLESS OTHERWISE NOTED.
 8. BASE THICKNESS IS NOT INCLUDED IN NOZZLE AND OVERALL HEIGHT DIMENSIONS.
- COATINGS:
- INTERIOR:
INTERIOR TANK SURFACES SHALL BE CLEANED FREE OF RUST, SLAG, & ALL OTHER FOREIGN MATTER.
- EXTERIOR:
SHELL, HEADS & SADDLES:
CLEAN SURFACE FREE OF RUST, SLAG, & ALL FOREIGN MATTER.
1 ct. SHERWIN WILLIAMS FLASH PRIMER.
1.5-2.0 MILS DFT
1 ct. SHERWIN WILLIAMS KEM 4000.
3.0-4.0 MILS DFT
4.5-6.0 TOTAL MILS DFT
COLOR: WHITE
- EXTERIOR BOTTOM OF SADDLE:
SURFACE PREP, PRIMED SAME AS EXTERIOR SHELL. OVERCOAT WITH ASPHALT.

DESIGN CONDITIONS			
DESIGN PRESSURE: ATMOS.	EMPTY WEIGHT: 14,700 LBS.	DATE: 1/13/2016	
DESIGN TEMP: AMBIENT	NOM. CAPACITY: 10,000 GAL.	DRAWN BY: JAA	CHECKED BY: CC
OPERATING PRESSURE: ATMOS.	OPER. CAPACITY: ---	SERIAL NUMBER: ---	
OPERATING TEMP: AMBIENT	RADIOGRAPHIC TEST: ---	PART NUMBER: 341723	
EXTERNAL PRES: ---	CORROSION ALLOWANCE: ---	PART NUMBER: PALMER STOCK	
M.D.M.T.: ---	SEISMIC: ---	GARDEN CITY, KS 67846	
CONTENTS: REFINED FUEL	WIND: ---	REVISED NUMBER: ---	
SPECIFIC GRAVITY: 1.0	MISC SPEC: UL-142	STANDARD NUMBER: STD-59X21-1	

REVISION HISTORY			
1	REVISED LENGTH OF SHEETS.	BL	7/8/2020 JAA
0	RELEASED FOR PRODUCTION	BL	5/20/2020 JAA
B	MARKUPS	JK	5/16/2020 JAA
A	PRELIMINARY DRAWING	CC	5/4/2020 JAA
REV	DESCRIPTION	CHK BY	DATE DWG BY

DESIGN CONDITIONS			
DESIGN PRESSURE: ATMOS.	EMPTY WEIGHT: 14,700 LBS.	DATE: 1/13/2016	
DESIGN TEMP: AMBIENT	NOM. CAPACITY: 10,000 GAL.	DRAWN BY: JAA	CHECKED BY: CC
OPERATING PRESSURE: ATMOS.	OPER. CAPACITY: ---	SERIAL NUMBER: ---	
OPERATING TEMP: AMBIENT	RADIOGRAPHIC TEST: ---	PART NUMBER: 341723	
EXTERNAL PRES: ---	CORROSION ALLOWANCE: ---	PART NUMBER: PALMER STOCK	
M.D.M.T.: ---	SEISMIC: ---	GARDEN CITY, KS 67846	
CONTENTS: REFINED FUEL	WIND: ---	REVISED NUMBER: ---	
SPECIFIC GRAVITY: 1.0	MISC SPEC: UL-142	STANDARD NUMBER: STD-59X21-1	