

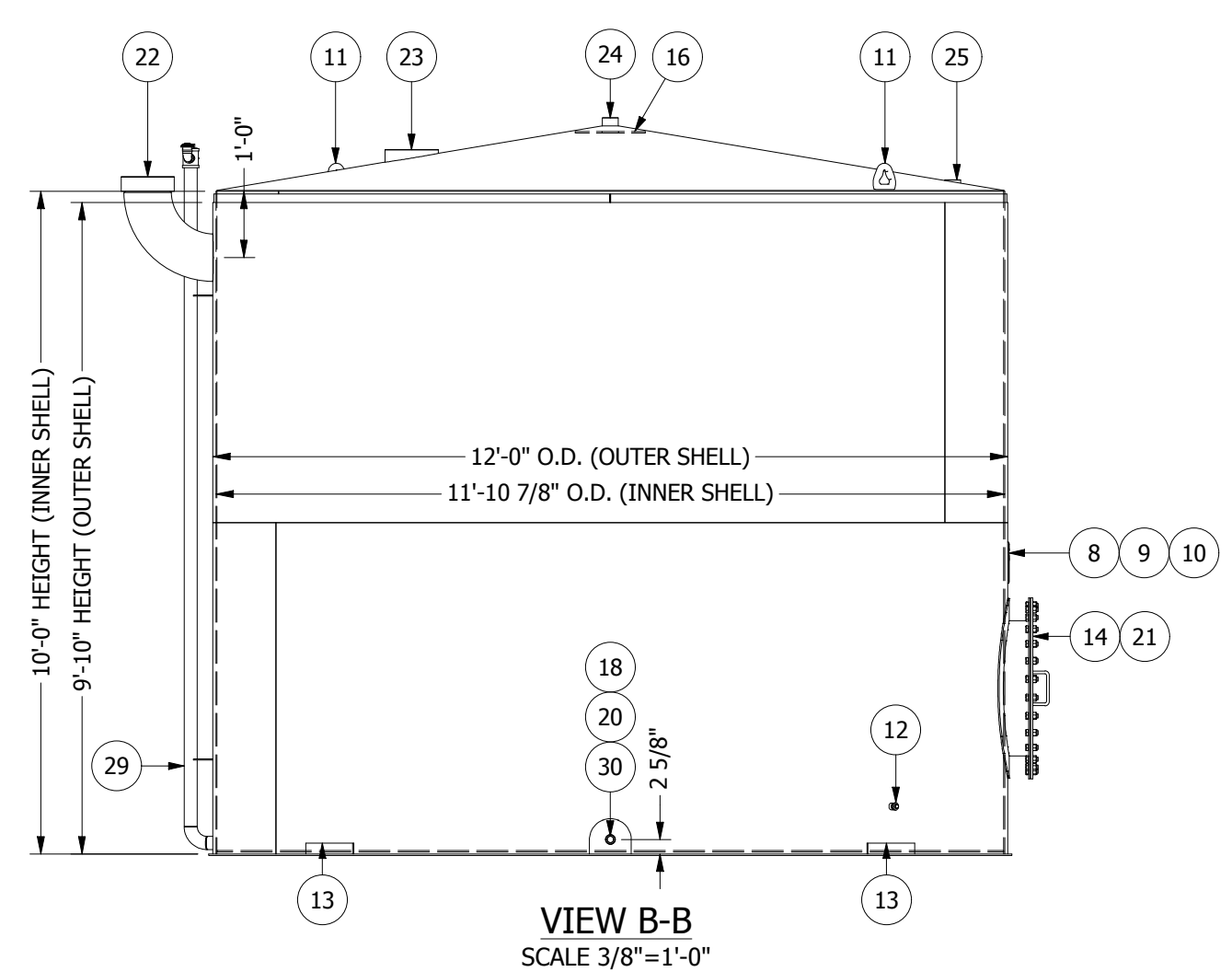
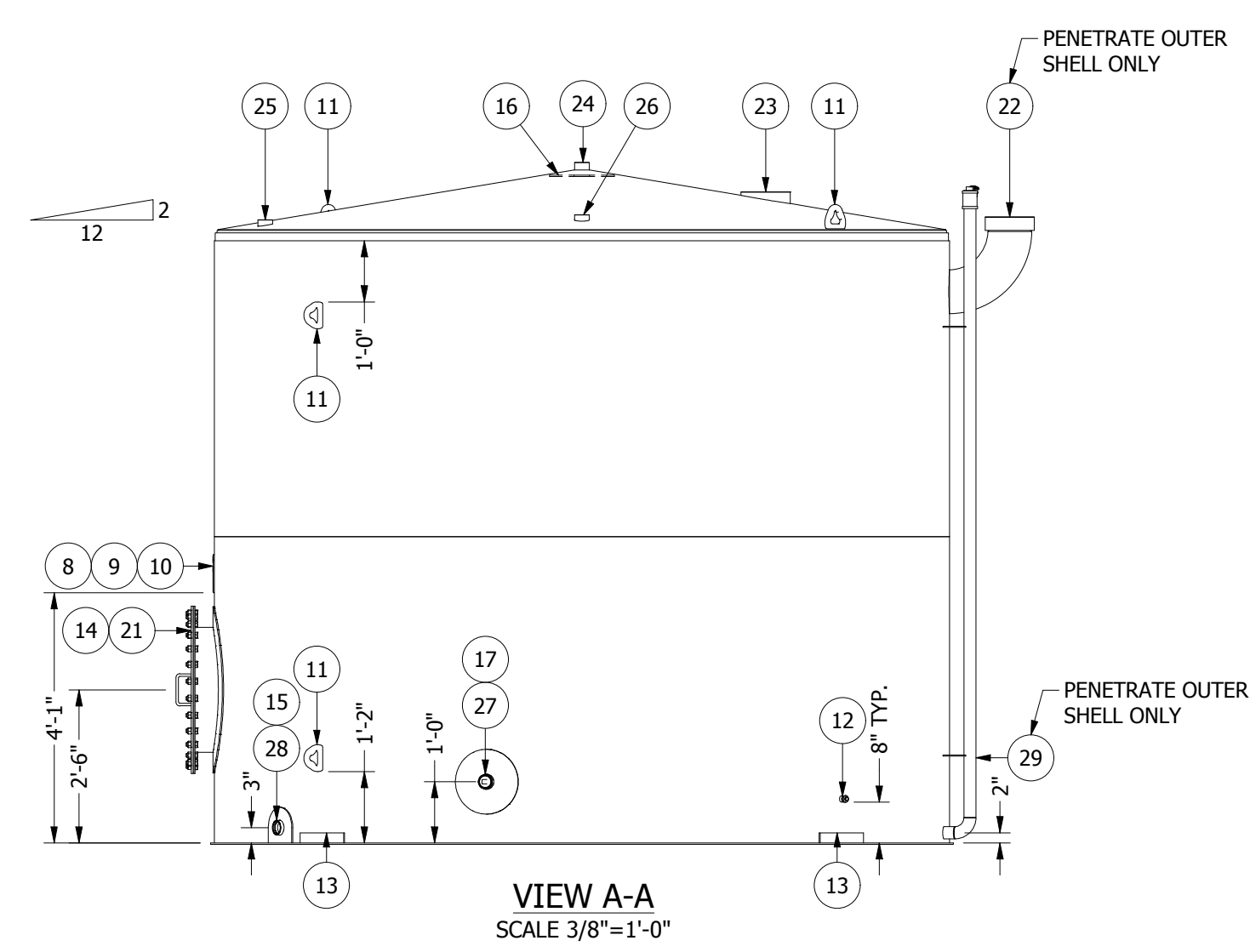
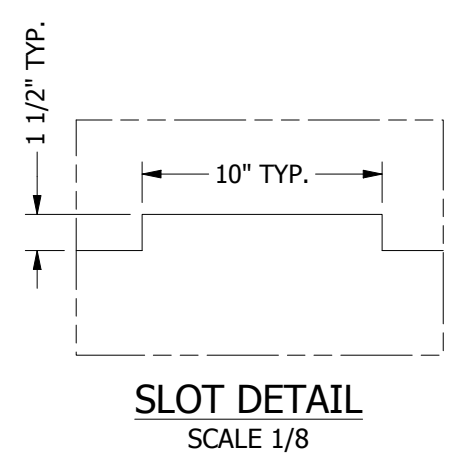
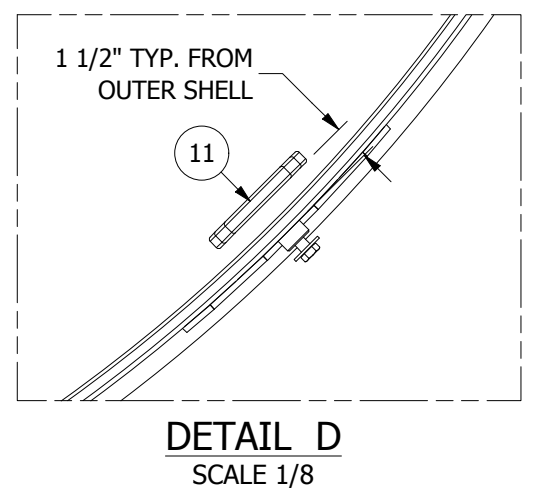
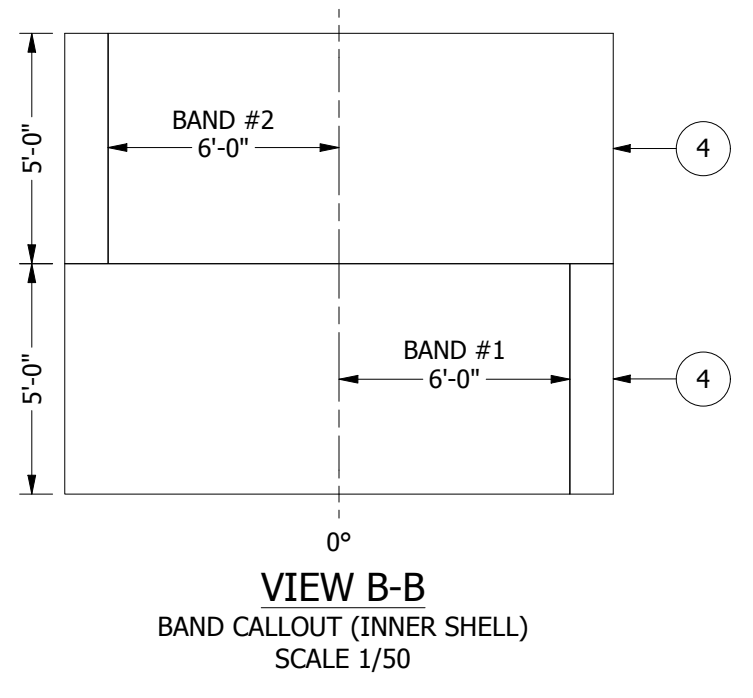
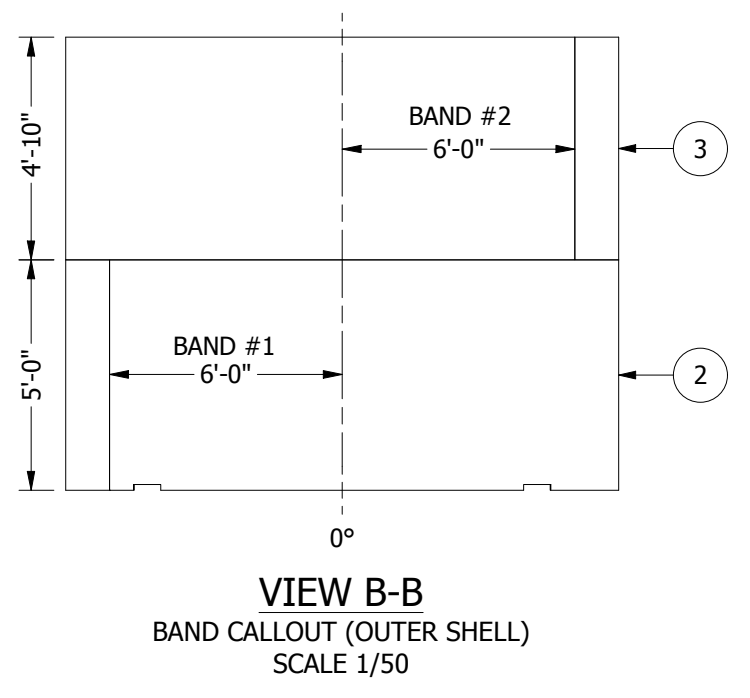
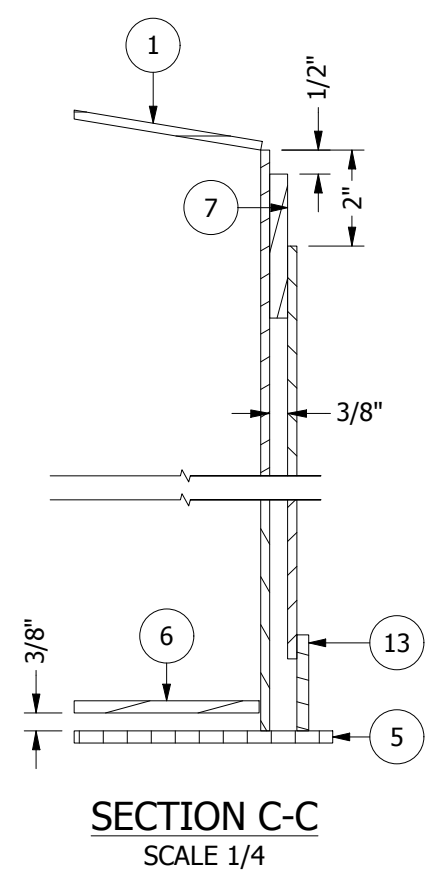
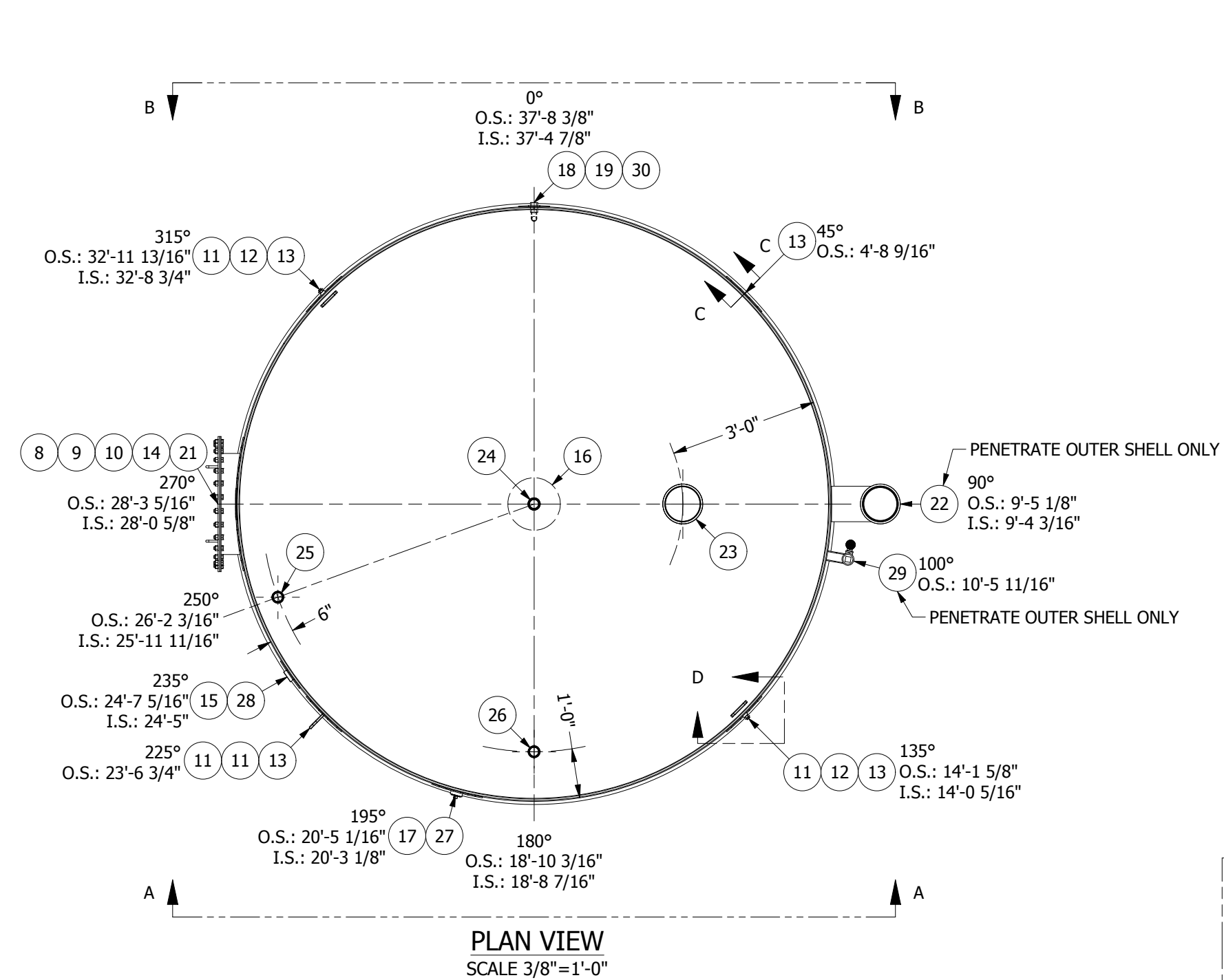


Certified UL-142 Double Wall Tank for Fuel Storage

Storage Capacity 8,000 Gallons

Tank Size 12' Diameter x 10' High Sidewall

Contact our Sales Department for Pricing



PARTS LIST					SERVICE	PROJ.	MATERIAL
SYM	ITEM	QTY	PART#	SHT#	DESCRIPTION		
	1	1	338576		TOP, 11'-10 1/2" D. X 3/16" THK. (12'-0 1/16" F.L.O.)		SA-36
	2	1	338574		BAND, 12'-0" D. X 5'-0" H. X 3/16" THK. (37'-7 11/16" S.C.L.)	OUTER	SA-36
	3	1	338574		BAND, 12'-0" D. X 4'-10" H. X 3/16" THK. (37'-7 11/16" S.C.L.)	OUTER	SA-36
	4	2	338574		BAND, 11'-10 7/8" D. X 5'-0" H. X 3/16" THK. (37'-4 3/16" S.C.L.)	INNER	SA-36
	5	1	338390		BOTTOM, 12'-1 1/2" D. X 1/4" THK.	OUTER	SA-36
	6	1	338390		BOTTOM, 11'-10 7/16" D. X 1/4" THK.	INNER	SA-36
	7	1	338136		SPACER, 11'-11 5/8" D. X 3" H. X 3/8" THK. (37'-5 15/16" S.C.L.)		SA-36
NP	8	1	338337		BRACKET, UL NAMEPLATE		SA-36
NP	9	1	346042	4	UL LABEL, ABOVEGROUND DOUBLEWALL		BRASS
NP	10	1	338215	4	NAMEPLATE, VERTICAL DOUBLEWALL TANK		ALUMINUM
LE	11	4	338382		LIFTEYE, PHOENIX FORGE MEDIUM		SA-105
GL	12	2	338155		GROUNDING LUG		CARBON STEEL
	13	4	338287		SLOT COVER		SA-36
	14	1	CNC	5	REPAD, MANWAY, 24" API-650 SHELL		SA-36
	15	1	CNC	6	REPAD-D, 2" COUPLING, API-5L		SA-36
	16	1	CNC	7	REPAD, 2" COUPLING, API-5L		SA-36
	17	1	CNC	8	REPAD, 2" COUPLING, API-5L		SA-36
	18	1	CNC	9	REPAD-D, 1" COUPLING, 3M		SA-36
	19	1	339045		PLUG, SQUARE HEAD, 2"		MALLEABLE IRON
	20	1	338835		PLUG, SQUARE HEAD, 1"		MALLEABLE IRON

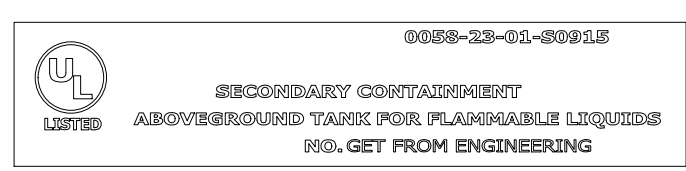
SCHEDULE OF FITTINGS					SERVICE	PROJ.	MATERIAL	
SYM	ITEM	QTY	PART#	SHT#	DESCRIPTION			
M1	21	1		10	MANWAY, 24" API-650 SHELL	ACCESS	4"	VARIOUS
N1	22	1		11	COUPLING, 8" FNPT HALF W/ ELBOW	SECONDARY EM. VENT		CARBON STEEL
N2	23	1	342025		COUPLING, 8" FNPT HALF	EM. VENT	1 1/4"	API-5L GR B
N3	24	1	338153		COUPLING, 2" FNPT	CONSERVATION VENT	1 1/2"	API-5L GR B
N4	25	1	338153		COUPLING, 2" FNPT	CLOCK GAUGE	1"	API-5L GR B
N5	26	1	338153		COUPLING, 2" FNPT	FILL	1"	API-5L GR B
N6	27	1	338153		COUPLING, 2" FNPT	SPARE	1"	API-5L GR B
N7	28	1	338153		COUPLING, 2" FNPT	PUMP	1"	API-5L GR B
N8	29	1		12	MONITOR TUBE, 2"	LEAK DETECTION		CARBON STEEL
N9	30	1		13	COUPLING, 1" 3M W/ ELBOW	MOISTURE DRAIN	1"	CARBON STEEL

NOTES:

- THE TANK IS TO BE POSITIVELY VENTED TO THE ATMOSPHERE AT ALL TIMES. IT IS THE RESPONSIBILITY OF THE CUSTOMER TO DETERMINE THE PROPER SIZE OF VENT TO PREVENT THE TANK FROM BEING OVER PRESSURIZED DURING FILLING AND TO PREVENT THE TANK FROM COLLAPSING DURING REMOVAL OF THE PRODUCT.
- ALL OPENINGS, INCLUDING FACE OF FLANGES, CONDUIT ENTRANCES, THREADED OPENINGS, & MECHANICAL SURFACES SHALL BE PLUGGED OR COVERED TO PROPERLY PROTECT FROM DAMAGE AND TO KEEP CONNECTIONS & INTERNALS CLEAN & DRY DURING STORAGE & SHIPPING.
- FLANGES INSTALLED IN THE SHELL WILL BE INSTALLED W/BOLT HOLES STRADDLING THE TANKS VERTICAL OR HORIZONTAL CENTER LINE. FLANGES INSTALLED IN THE HEADS WILL BE INSTALLED W/BOLT HOLES STRADDLING THE 0°-180° & 90°-270° CENTER LINES.
- LEAK TEST TANK BY AIR PRESSURE. APPLY AIR PRESSURE IN PRIMARY TANK TO 1 1/2 PSI PRIOR TO INSTALLING SECONDARY CONTAINMENT. HOLD PRESSURE AND APPLY SEAM TEST SOLUTION TO EACH WELD TO ASSURE NO LEAKS ARE PRESENT. RELIEVE PRESSURE AND INSTALL SECONDARY CONTAINMENT. PRESSURIZE PRIMARY TANK TO 1 1/2 PSI. HOLD PRESSURE AND APPLY SEAM TEST SOLUTION TO EACH WELD TO ASSURE NO LEAKS ARE PRESENT. BLEED PRESSURE FROM PRIMARY TANK INTO ANNULAR SPACE. INCREASE PRESSURE IN INNER TANK TO 1 1/2 PSI. APPLY SEAM TEST SOLUTION TO EACH WELD TO ASSURE NO LEAKS ARE PRESENT.
- TEST ANNULAR SPACE BY APPLYING A VACUUM EQUIVALENT TO 13-15 INCHES Hg. HOLD FOR A MINIMUM OF 12 HOURS VACUUM SHOULD MAINTAIN 13-15 Hg ±2" Hg.
- ALL DIMENSIONS SHOWN AS NOMINAL (NOM) ARE ± 1-1/2%. ALL OTHER DIMENSIONS ARE ± 1/8" UNLESS OTHERWISE NOTED.
- BASE THICKNESS IS **NOT** INCLUDED IN NOZZLE AND OVERALL HEIGHT DIMENSIONS.

COATINGS:

- INTERIOR:**
INTERIOR TANK SURFACES SHALL BE CLEANED FREE OF RUST, SLAG, & ALL OTHER FOREIGN MATTER.
- EXTERIOR:**
SHELL AND TOP:
CLEAN SURFACE FREE OF RUST, SLAG, & ALL FOREIGN MATTER.
1 ct. SHERWIN WILLIAMS FLASH PRIMER.
1.5-2.0 M.D.F.T.
1 ct. SHERWIN WILLIAMS KEM 4000.
3.0-4.0 M.D.F.T.
4.5-6.0 TOTAL M.D.F.T.
COLOR: WHITE
- EXTERIOR BOTTOM:**
SURFACE PREP, PRIMED SAME AS EXTERIOR SHELL. OVERCOAT WITH ASPHALT.



Palmer
PUMP & TANK INC.
GARDEN CITY, KS 66503-9136

TAG NO. _____ DATE BUILT XX/XX/XX
SERIAL NUMBER _____
DIAMETER 12'-0" HEIGHT 10'-0"
CAPACITY 8,241 GAL TEMP AMBIENT S.G. 1.0
CONTENTS FUEL
PRESSURE DESIGN ATMOS WORKING ATMOS
MATERIAL SA-36 TOP THK 3/16"
BOTTOM THK 1/4" / 1/4" SHELL THK 3/16" / 3/16"
CUSTOMER _____
CUSTOMER P.O. _____

THIS TANK REQUIRES EMERGENCY RELIEF VENTING. CAPACITY NOT LESS THAN 350,167 CUBIC FEET PER HOUR FOR INNER TANK AND 350,167 CUBIC FEET PER HOUR FOR ANNULAR SPACE.

DESIGN CONDITIONS					
DESIGN PRESSURE: ATMOS.	EMPTY WEIGHT: 10,000 LBS.				
DESIGN TEMP: AMBIENT	NOM. CAPACITY: 8,241 GAL.				
OPERATING PRESSURE: ATMOS.	OPER. CAPACITY: ---				
OPERATING TEMP: AMBIENT	RADIOGRAPHIC TEST: ---				
EXTERNAL PRES: ---	CORROSION ALLOWANCE: ---				
M.D.M.T.: ---	SEISMIC: ---				
CONTENTS: FUEL	WIND: ---				
SPECIFIC GRAVITY: 1.0	MFG SPEC: UL-142				
DATE: 10/1/2019	DRAWN BY: C.C.				
CHECKED BY: _____	SCALE: _____				
TANK NAME: FUEL STORAGE TANK	S.D. NUMBER: 40707				
PALMER MFG & TANK	PART NUMBER: 410030				
REV	DESCRIPTION	CHK BY	DATE	DWG BY	REV
1	ADD DIMENSIONS ON MONITOR TUBE DETAIL.		12/12/2019	C.C.	
0	RELEASED FOR PRODUCTION.		10/25/2019	C.C.	
A	PRELIMINARY SKETCH.		10/23/2019	C.C.	

REV	DESCRIPTION	CHK BY	DATE	DWG BY	REV
1	ADD DIMENSIONS ON MONITOR TUBE DETAIL.		12/12/2019	C.C.	
0	RELEASED FOR PRODUCTION.		10/25/2019	C.C.	
A	PRELIMINARY SKETCH.		10/23/2019	C.C.	