



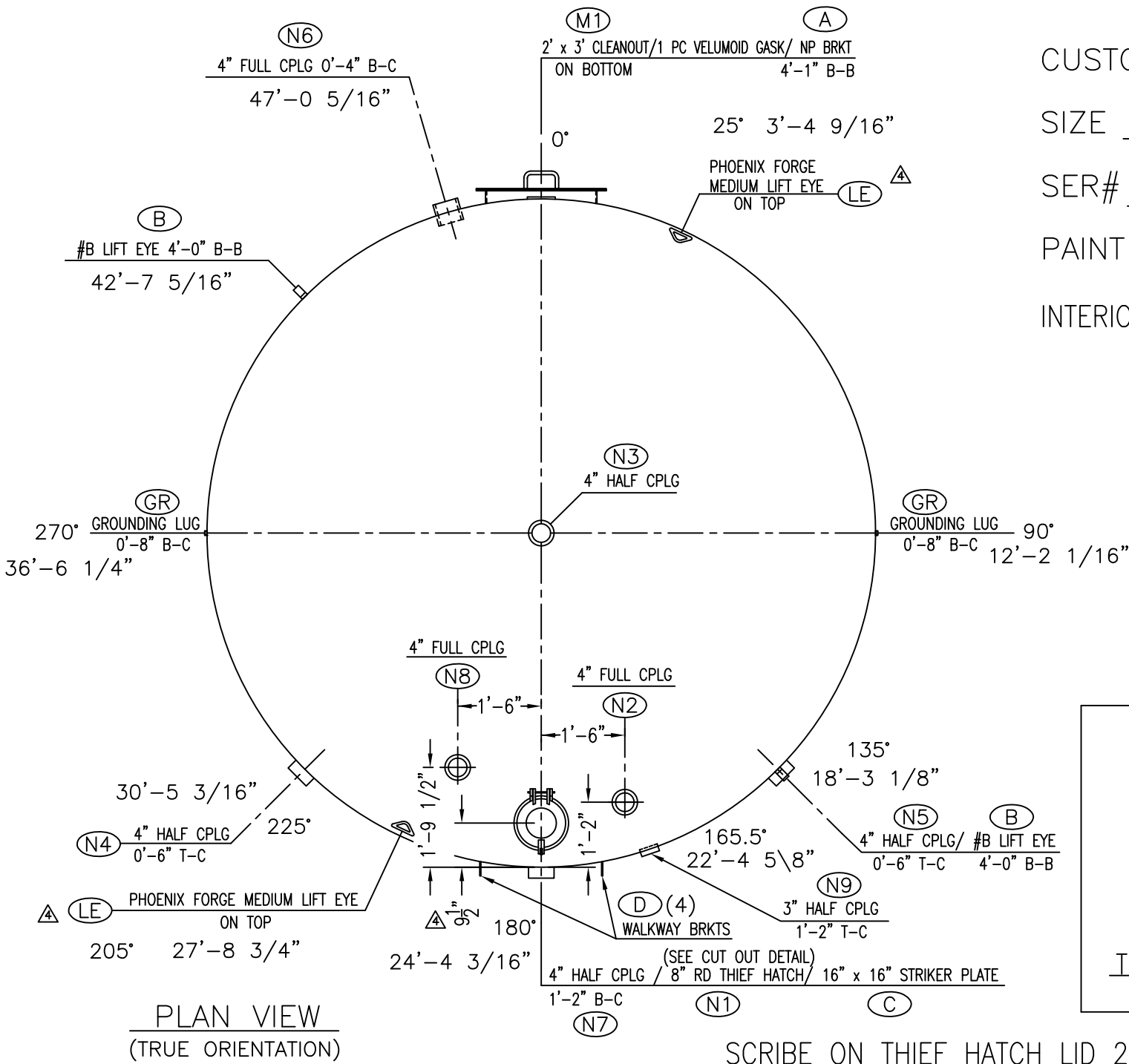
Vertical Steel Storage Tank

Storage Capacity 200 BBL

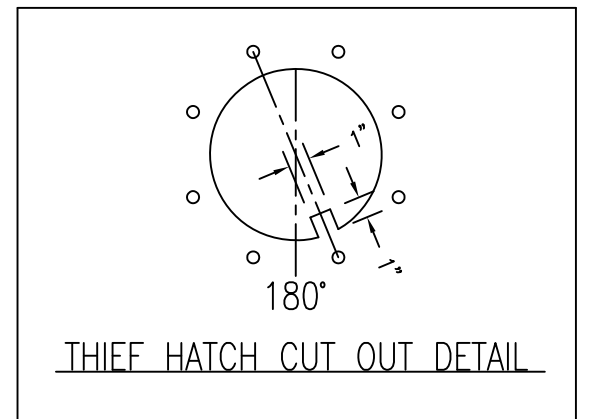
Tank Size 15'-6" Diameter x 6' Straight Shell

Contact our Sales Department for Pricing

48'-8 5/16"



CUSTOMER _____
 SIZE 200 BBL (15'-6" x 6'-0")
 SER# _____
 PAINT TAN
 INTERIOR NONE



SCRIBE ON THIEF HATCH LID 2.790 BBL/INCH

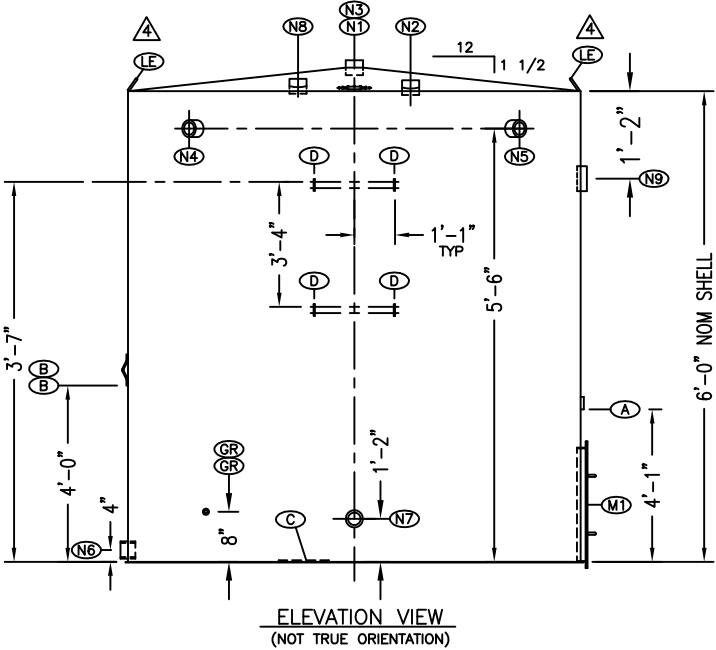
PLAN VIEW
(TRUE ORIENTATION)

BILL OF MATERIALS

SYM.	QTY.	DESCRIPTION	MODEL NUMBER	WELD DETAIL	MATERIAL
	1	TOP HEAD: 15'-6" O.D., 3/16" NOM. - CONICAL SHAPE		HD	SA-36
	1	BOTTOM HEAD: 15'-7 1/2" O.D., 1/4" NOM. - FLAT BOTTOM		HG	SA-36
	1	SHELL: 15'-6" O.D. x 6'-0" TALL, 3/16" NOM.		SC	SA-36
A	1	NAMEPLATE BRACKET	PINV 10051		SA-36
	1	NAMEPLATE			ALUMINUM
B	2	STYLE 'B' HEAVY LIFT EYE	PINV 10021		SA-36
C	1	16" x 16" x 1/4" STRIKER PLATE	PINV 30037		SA-36
D	4	WALKWAY BRACKET	PINV 10043		SA-36
	1	GASKET FOR 24" x 36" CLEANOUT	PINV 06029A		1 PIECE VELUMOID
	1	BOLT KIT FOR 24" x 36" CLEANOUT	PINV 06007		ASTM A-307-00
	1	BOLT KIT FOR 8" THIEF HATCH	PINV 06005		ASTM A-307-00
GR	2	GROUNDING LUG WITH TAPPED HOLE & 1/2" x 3/4" LONG BOLT	PINV 10010A1		SA-36/A-307-00
LE	2	PHOENIX FORGE MEDIUM LIFT EYES			SA-105

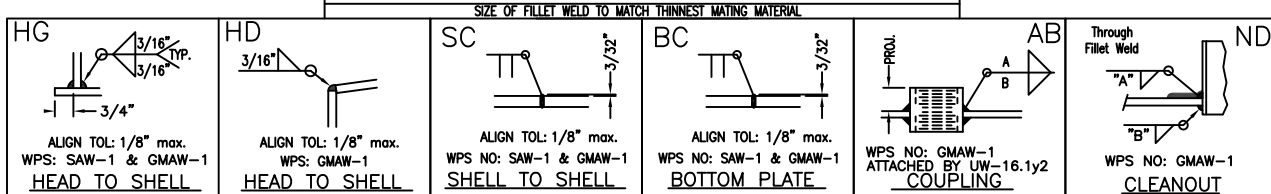
SYM.	QTY.	DESCRIPTION	SERVICE	COMPONENT	PROJECTION		WELD SIZE		WELD DETAIL	MATERIAL
					OUTSIDE	INSIDE	"A"	"B"		
M1	1	24" x 36" CLEANOUT w/1 PC VELUMOID GASKET	ACCESS	CLEANOUT	1 3/4"		3/16"	3/16"	ND	SA-36
N1	1	8" ROUND THIEF HATCH w/GASKET	INSPECTION				3/16"	3/16"	(BOLTED)	ALUMINUM
N2	1	4" FNPT FULL COUPLING	FILL	COUPLING	1"		3/16"	3/16"	AB	SA-105
N3	1	4" FNPT HALF COUPLING	AUXILIARY	COUPLING	1"		3/16"	3/16"	AB	SA-105
N4	1	4" FNPT HALF COUPLING	OVERFLOW	COUPLING	1"		3/16"	3/16"	AB	SA-105
N5	1	4" FNPT HALF COUPLING	OVERFLOW	COUPLING	1"		3/16"	3/16"	AB	SA-105
N6	1	4" FNPT FULL COUPLING	DRAIN	COUPLING	1"		3/16"	3/16"	AB	SA-105
N7	1	4" FNPT HALF COUPLING	PIPE LINE	COUPLING	1"		3/16"	3/16"	AB	SA-105
N8	1	4" FNPT FULL COUPLING	VENT	COUPLING	1"		3/16"	3/16"	AB	SA-105
N9	1	3" HALF COUPLING	?	COUPLING	1"		3/16"	3/16"	AB	SA-105

ITEMS TO SHIP LOOSE		
DESCRIPTION	MODEL NUMBER	MATERIAL



ELEVATION VIEW
(NOT TRUE ORIENTATION)

WELD DETAILS



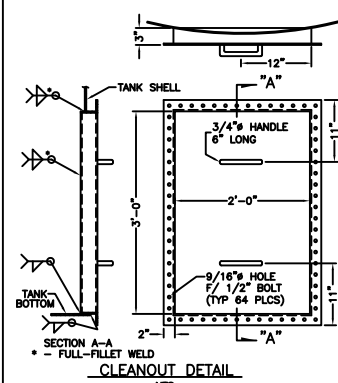
NOTES:

- COATINGS-INTERIOR: NONE
 EXTERIOR:
 BOTTOM: COATED WITH ASPHALT. (THIS IS STANDARD UNLESS NOTED OTHERWISE.)
- SHOP TEST TANK BY AIR PRESSURE TO 2 1/2 PSI.
- DIMENSIONAL TOLERANCE: ± 1/8" UNLESS OTHERWISE NOTED.
 OVERALL HEIGHT OF SIDEWALL: ± 3/8".
- TOLERANCE OF STEEL PLATES: -0.01" + 0.03"

Palmer MFG. & TANK INC.
 BOX 1195 - 2814 WEST JONES - GARDEN CITY, KS.
 PHONE 620-275-7461 1-800-835-9136

TANK NAME: _____
 TANK TAG NO.: _____
 CONTENTS: OIL/WATER
 DATE OF MFR: 2005 SERIAL NO.: _____
 SIZE, DIA. 15'-6" HEIGHT 6' LENGTH _____
 MATERIAL SA-36 TOP THK 3/16"
 BOTTOM THK 1/4" SHELL THK 3/16"
 CAPACITY, GAL 8,466 TEMP AMBIENT S.G. 1.0
 PRESSURE (PSI)-DESIGN ATMOS WORKING ATMOS
 CUSTOMER/P.O.: _____
 ADDITIONAL: _____

VST NAMEPLATE
 NTS



SYM.	DESCRIPTION	APPROVED BY	DATE	DWGN. BY
△	MOVED THIEF HATCH TO 9 1/2". ADDED LIFT EYES ON TOP		7/15/06	JK
△	ADDED THIEF HATCH CUT-OUT DETAIL		6/23/06	BH
△	ADDED N9 AT 165.5", & GRD. LUGS AT 90° & 270°		04/24/06	BH
△	CHANGE GASKET FROM NEOPRENE TO VELUMOID, ADD PINV NUMBERS		06/03/04	DM

DESIGN CONDITIONS	MATERIAL CONSTRUCTION
PRESSURE: +16 / -1/2 OZ.	MATERIALS & COUPLINGS: PER API-12F
TEMPERATURE: AMBIENT	
CONTENTS: OIL/WATER	
SPECIFIC GRAVITY: 1.0 (MAX)	BOLTING: ASTM A-307-00
EMPTY WEIGHT: 7,000 LBS. (NOM.)	RADIOGRAPH: NONE
CAPACITY: 8,466 GAL./200 BBL (NOM)	MFG. SPEC.: PALMER
SCALE: 3/8"=1'-0" DATE: 01/13/05 DWN. BY: B.HESTER	

Palmer MFG. & TANK INC.
 GARDEN CITY, KANSAS.

DRAWING NUMBER: 15'-6" DIA. x 6'-0" H VST
 REV -200B 4