

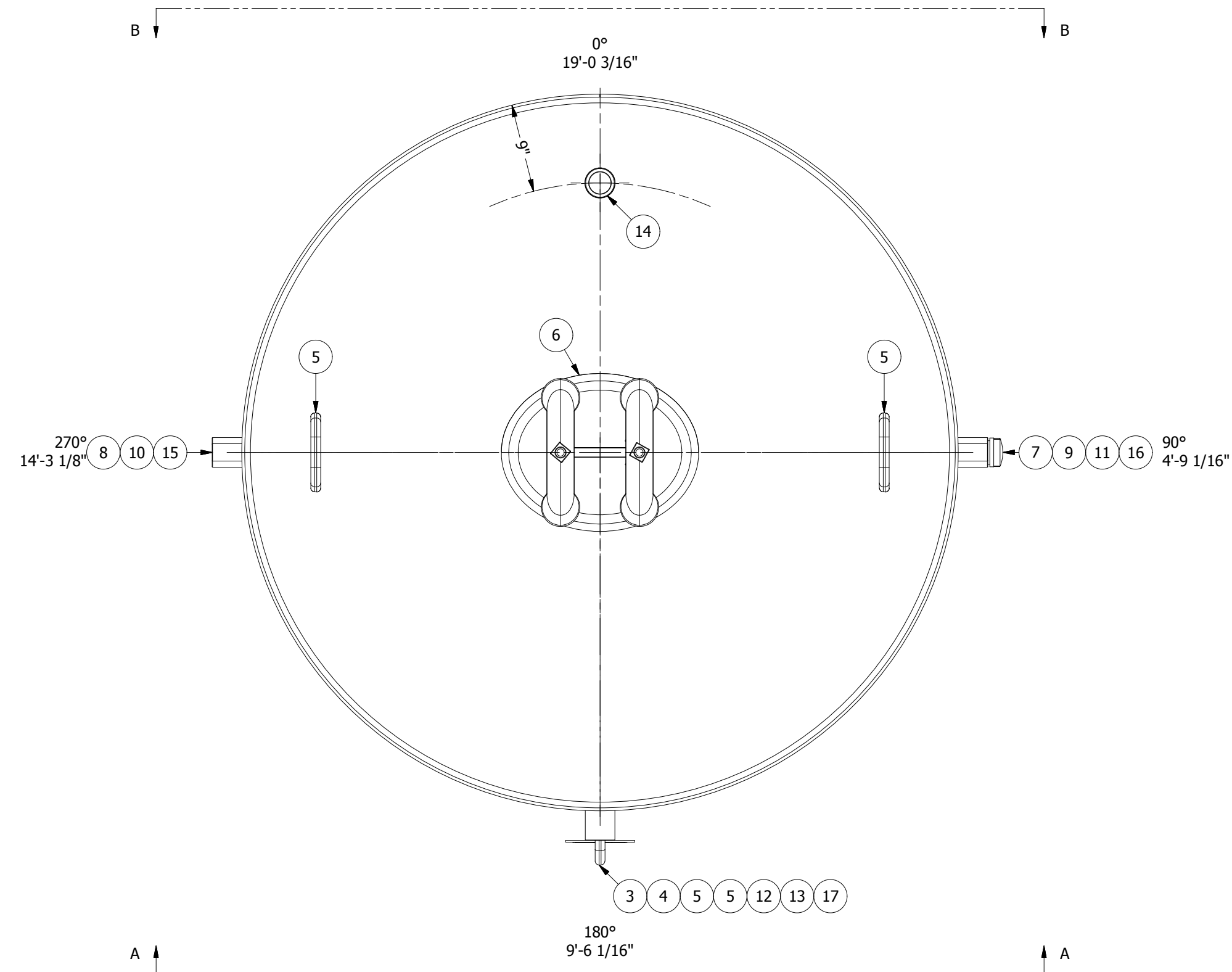


Hot Water Pressure Tank

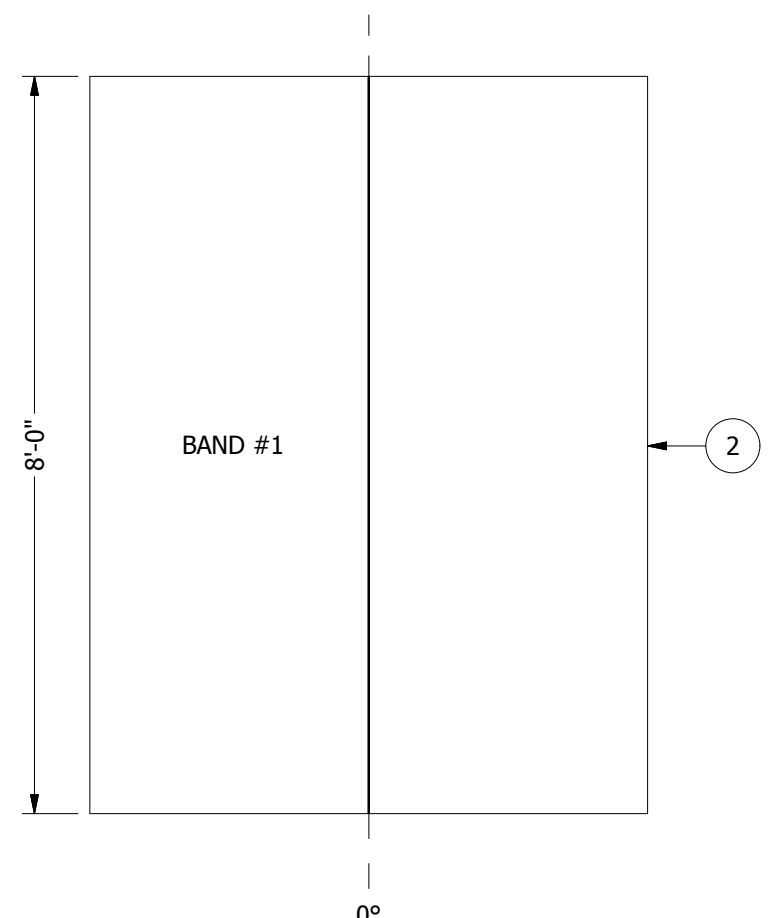
Storage Capacity 1,400 Gallons

Tank Size 6'-0 5/8" Diameter x 8' High Sidewall with Insulation

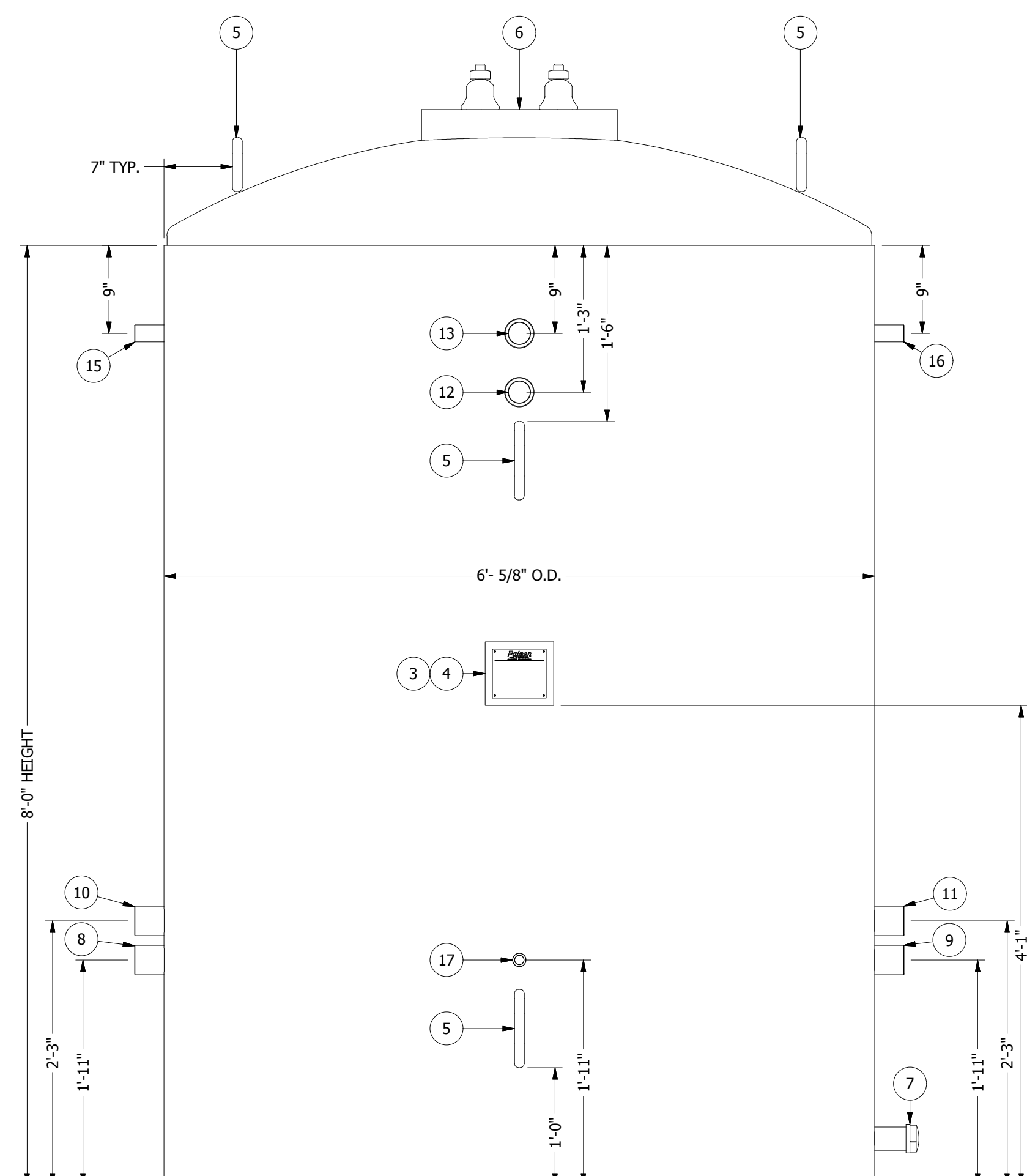
Contact our Sales Department for Pricing



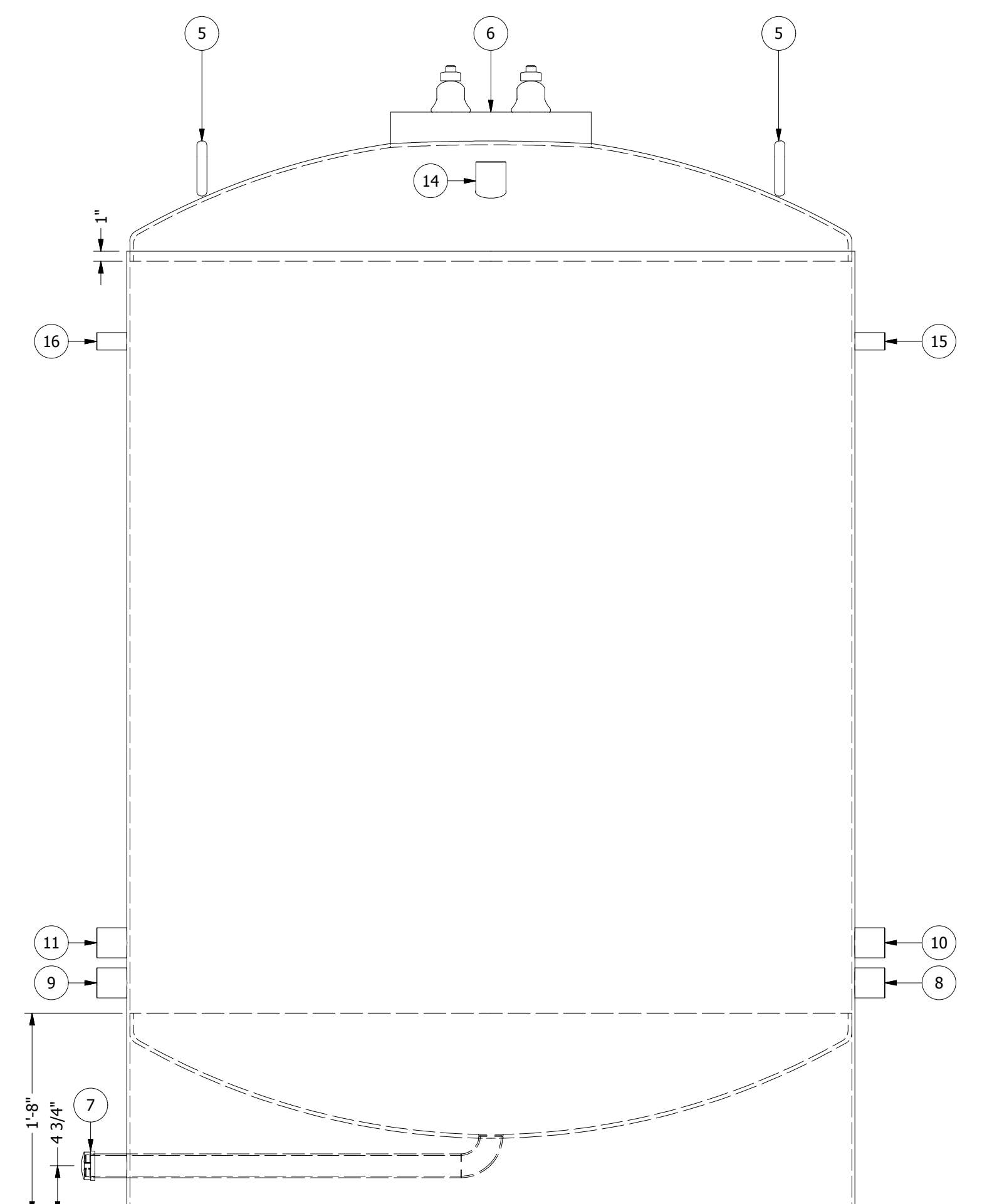
PLAN VIEW
SCALE 1"=1'-0"



VIEW B-B
BAND CALLOUT
SCALE 1/25



VIEW A-A
SCALE 1"=1'-0"



VIEW B-B
SCALE 1"=1'-0"

PARTS LIST						
ITEM	QTY	PART#	SHT#	DESCRIPTION	SERVICE PROJ. MATERIAL	
1	2	342016		HEAD, 6'-0" D x 3/8" THK, 2" FLG, 12 1/2" DP		SA-36
2	1	346996		BAND, 6'-0 5/8" D x 8'-0" H x 5/16" THK (18'-11 1/16" SCL)		SA-36
3	1	338215	4	NAMEPLATE, VERTICAL TANK		ALUMINUM
4	1	348819		BRACKET, NAMEPLATE 3" EXTENDED		SA-36
5	4	338944		LIFTEYE, PHOENIX FORGE LARGE		SA-105

SCHEDULE OF FITTINGS						
ITEM	QTY	PART#	SHT#	DESCRIPTION	SERVICE PROJ. MATERIAL	
6	1			MANWAY		3" VARIOUS
6.1	1	339905		MANWAY, 14" X 18" X 3/4" X 6"		CARBON STEEL
6.2	1	340294		GASKET, 1/4" X 18" X 1/8" PRESSURE MANWAY		BLUE MAX
7	1		5	DRAIN PIPE, 2"	DRAIN	304 S.S.
15	1	338818		COUPLING, 1" 3M X 6" LONG		3" SA-105
16	1	338818		COUPLING, 1" 3M X 6" LONG		3" SA-105
8	1	342086		COUPLING, 2" 3M X 6" LONG		3" SA-105
9	1	342086		COUPLING, 2" 3M X 6" LONG		3" SA-105
10	1	342086		COUPLING, 2" 3M X 6" LONG		3" SA-105
11	1	342086		COUPLING, 2" 3M X 6" LONG		3" SA-105
12	1	342086		COUPLING, 2" 3M X 6" LONG		3" SA-105
13	1	342086		COUPLING, 2" 3M X 6" LONG		3" SA-105
14	1	342086		COUPLING, 2" 3M X 6" LONG		3" SA-105
17	1	339072		COUPLING, 3/4" 3M HALF X 6" LONG		3" SA-105

NOTES:

- FACTORY TEST TANK FOR LEAKS WITH LEAK TEST BY AIR PRESSURE. APPLY AIR PRESSURE IN TANK TO 1 1/2 PSI. HOLD PRESSURE AND APPLY SEAM TEST SOLUTION TO EACH WELD TO ASSURE NO LEAKS ARE PRESENT.
- SHOP TO HYDRO TEST TANK TO 85 PSI.
- ALL DIMENSIONS SHOWN AS NOMINAL (NOM) ARE ± 1-1/2%.

COATINGS:

INTERIOR:
 INTERIOR TANK SURFACES SHALL BE CLEANED FREE OF RUST, SLAG, & ALL OTHER FOREIGN MATTER. GRIND ALL CORNERS TO 1/8" RADIUS. INTERIOR WELDS TO BE ROUNDED AND SMOOTH. SSPC-SP10/NACE 2 NEAR-WHITE BLAST CLEANING. INSPECT WELDS FOR PIN HOLES.
 1 ct. SHERWIN WILLIAMS DURA-PLATE UHS B62W210 ULTRA HIGH SOLIDS EPOXY.
 18.0-22.0 M.D.F.T.
 HOLIDAY TEST PER ASTM D5162 (WET SPONGE)

EXTERIOR INSTULATION:
SHELL & TOP:
 EXTERIOR TANK SURFACES SHALL BE CLEANED FREE OF RUST, SLAG, & ALL OTHER FOREIGN MATTER. 2" SPRAY FOAM INSULATION. BEVEL SPRAY FOAM AROUND FITTINGS.
 1 ct. SHERWIN WILLIAMS DTM.
 2.5-4.0 M.D.F.T.
COLOR: WHITE

Palmer
 PUMP & TANK INC.
 GARDNER CITY, MO 64558-9136

TAG NO. HWPT-1400-A
 SERIAL NUMBER: 409958 DATE BUILT: XX/XX/XX
 DIAMETER: 6'-0 5/8" HEIGHT: 8'-0"
 CONTENTS: WATER

CAPACITY: 1,400 GAL. TEMP: 150°F S.G.: 1.0
 PRESSURE DESIGN: 65 PSI WORKING: 65 PSI
 MATERIAL: SA-36 TOP THK: 3/8"
 BOTTOM THK: 3/8" SHELL THK: 5/16"
 CUSTOMER: _____
 CUSTOMER P.O.: _____

DESIGN CONDITIONS

DESIGN PRESSURE: 65 PSI	EMPTY WEIGHT: 3,600 LBS
DESIGN TEMP: 150°F	NOM. CAPACITY: 1,400 GAL
OPERATING PRESSURE: 65 PSI	OPER. CAPACITY: ---
OPERATING TEMP: AMBIENT	RADIOGRAPHIC TEST: ---
EXTERNAL PRES: ---	CORROSION ALLOWANCE: ---
M.D.M.T.: ---	SEISMIC: ---
CONTENTS: WATER	WIND: ---
SPECIFIC GRAVITY: 1.0	MFG SPEC: PALMER

Palmer
 MFG. & TANK INC.

TANK NAME: HOT WATER PRESSURE TANK
 S.D. NUMBER: _____
 PART NUMBER: 409958
 DRAWING NUMBER: HWPT-1400-A-1
 SHEET: 1 OF 5

DATE: 9/17/2019
 DRAWN BY: C.C.
 CHECKED BY: _____

REV	DESCRIPTION	CHK BY	DATE	DWG BY
0	RELEASED FOR PRODUCTION.		9/17/2019	C.C.